

# SWG3

PRODUCTION SPEC SEPTEMBER 2021

SWG3



# ADDITIONAL PROMOTER COSTS

## STANDARD GIG LOAD IN TIMES

Galvanizers -	12pm	(£50+VAT Per Hour Early Load In)
TV Studio -	1pm	(£50+VAT Per Hour Early Load In)
Warehouse -	3pm	(£30+VAT Per Hour Early Load In)
Poetry Club -	4pm	(£15+VAT Per Hour Early Load In)

## MERCH CONCESSION

Please note that there is a concession to sell merchandise within the Galvanizers, TV Studio and Warehouse Venues. This is charged at 12 pence + VAT per ticket sold and will be settled post show.

## TOWELS

Towels can be supplied by the venue for £1.50 + Vat Per Towel

## CONFETTI CLEAN UP

Confetti clean up fee is £250+Vat

## NEXUS 2 CDJ KIT

1 x DJM900NX2 4 x CDJ2000NX2 can be supplied for £120+vat

## CONTENTS

Important Information	Page 3
SWG3 Ground Floor Map	Page 4
SWG3 Upper Floor Maps	Page 5
Galvanizers Floor Plan	Page 6 & 7
Galvanizers Tech Spec	Page 8
TV Studio Floor Plan	Page 9
TV Studio Tech Spec	Page 10
Warehouse Floor Plan	Page 11
Warehouse Tech Spec	Page 12
Poetry Club Floor Plan	Page 13
Poetry Club Tech Spec	Page 14
SWG3 Local Area Map	Page 15

# IMPORTANT INFORMATION

## GALVANIZERS AND TV STUDIO BACKSTAGE AREA (Galvanizers has dressing room priority)

- 3 x Dressing Rooms
- 1 x Production Office
- 4 x Toilets
- 4 x Showers
- 1 x Laundry room

## WAREHOUSE AND POETRY CLUB BACKSTAGE AREA (Warehouse has dressing room priority)

- 1 x Production Office
- 2 x Dressing Rooms
- 1 x Shower in main dressing room
- 1 x Toilet in main dressing room

## PARKING INFORMATION

Please ask for parking information in regards to your show with your venue contact.  
We can offer 32/3 Ceeform power for busses in 3 different locations.  
Load out cannot be conducted throughout the side of the Galvanisers after 10pm due to noise affecting nearby residents. Load Out after 10pm must be conducted throughout the front of the venue onto Eastvale Place.

## NON UK POWER

We have no European or US Power Adapters.  
We can only provide UK 240v Power.

## AVAILABLE MICROPHONES PER ROOM

- 2 x ShureB91
- 2 x ShureB52
- 4 x ShureSM57
- 8 x ShureSM58
- 4 x SennheiserE604
- 2 x SennheiserE609
- 3 x AKG 430
- 3 x ATM 450
- 6 x Mono KT DI
- 2 x Stereo KT DI

## AVAILABLE DJ BACKLINE PER ROOM

- 1 x Pioneer DJM900 Nexus Mixer or Allen & Heath Xone92 Mixer
- 2 x Pioneer CDJ2000 Nexus CDJs
- 2 x Technics 1210 MkII Turntables
- 2 x Ortofon DJ Catridges
- 1 x Netgear GS105 LAN Hub

## ADDITIONAL DJ BACKLINE

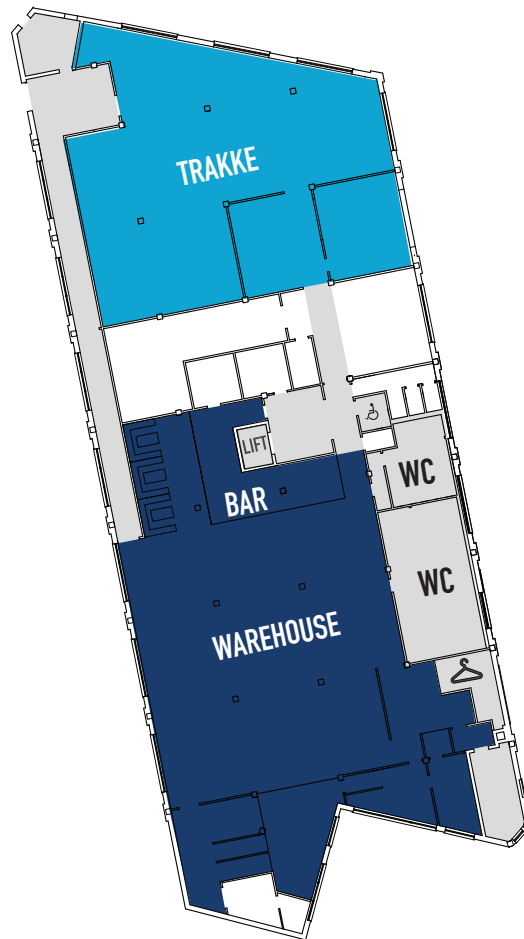
- 1 x Sennheiser E835 G3 Radio Mic

DJM900NX2 & 4x CDJ2000NX2 can be supplied for £120+Vat

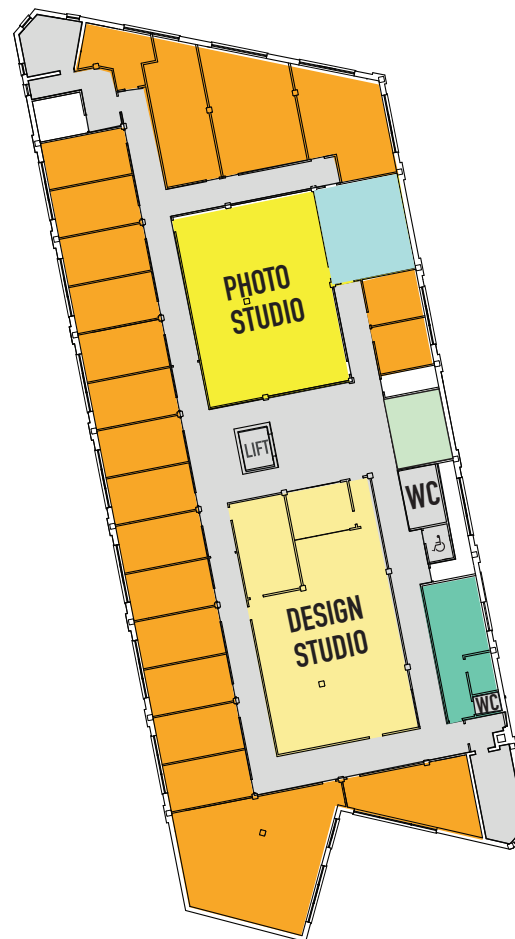
## GROUND LEVEL



LEVEL 1

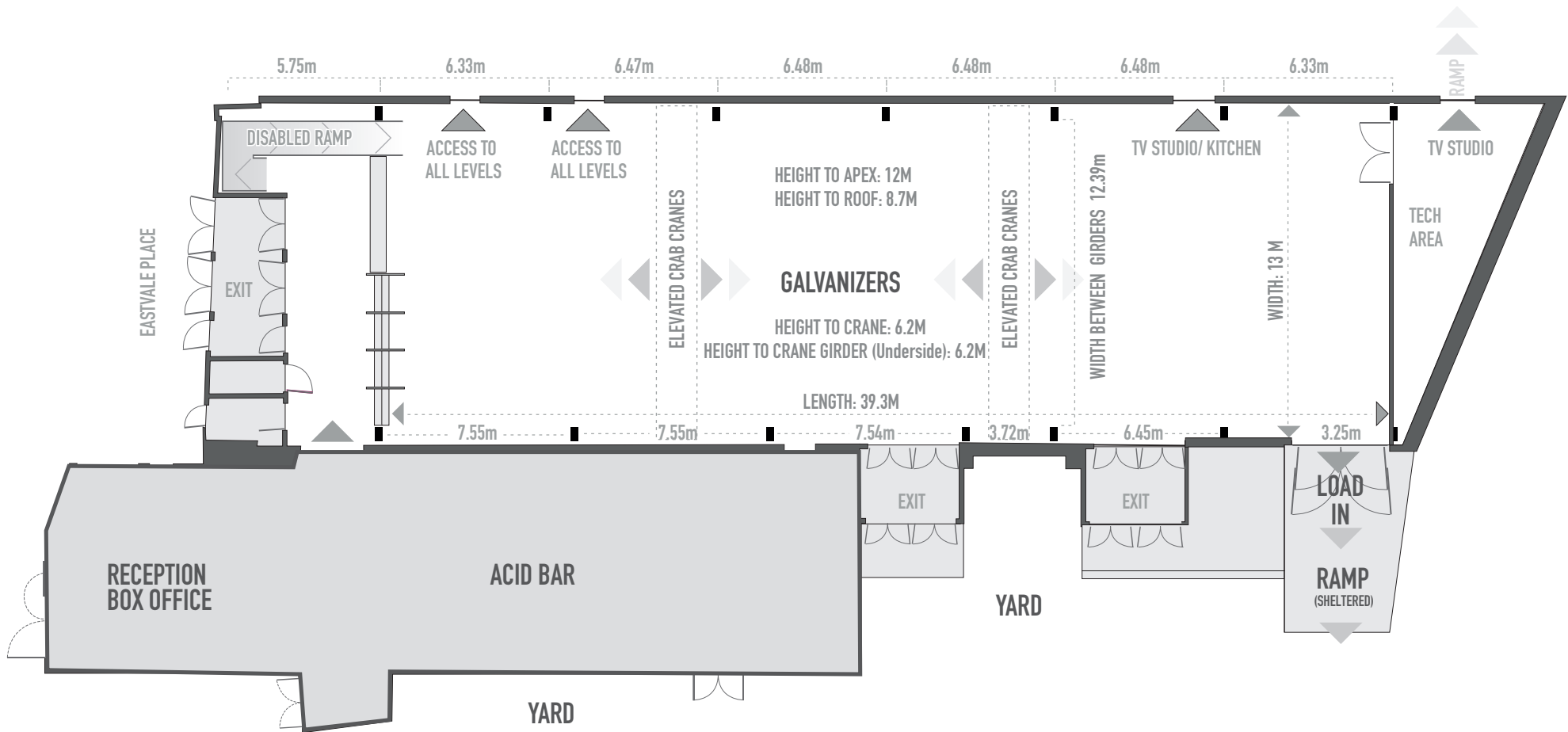


LEVEL 2



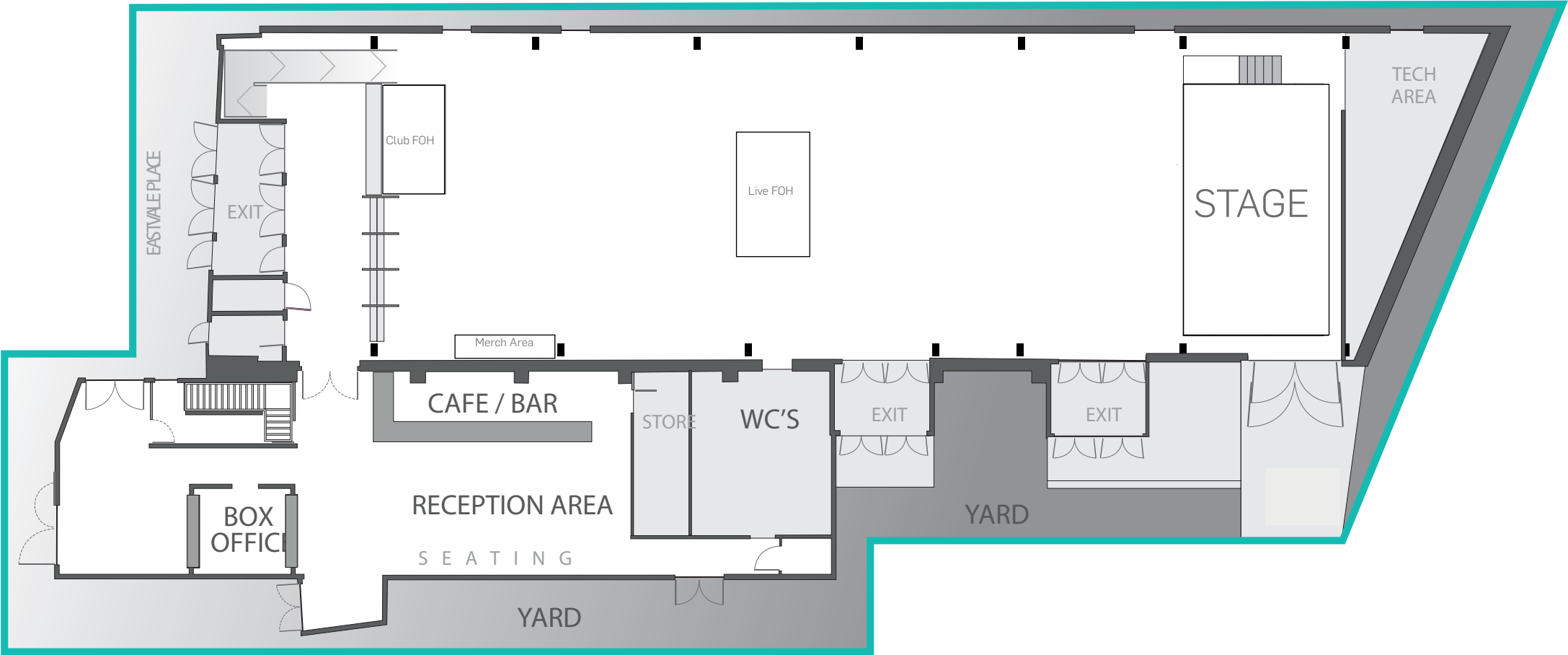
- WAREHOUSE
- TRAKKE
- ARTIST STUDIOS
- DESIGN STUDIO
- PHOTO STUDIO
- ACCESS
- KITCHEN
- DRESSING ROOM 1
- DRESSING ROOM 2

# SWG3 GALVANIZER HALL TECHNICAL MEASUREMENTS



SWG3

GALVANIZERS FLOOR PLAN



# GALVANISERS TECH SPEC

## PA

D&B V Series Line Array  
(Array Processed)  
consisting of:  
6 x D&B V8 Per Side  
10 x D&B V-SUB Array  
2 x D&B Y7P Front Fill  
2 x D&B V7P Delays  
5 x D&B D80 Amplifiers

## MONITORS (LIVE)

10 x D&B M4 Wedges  
2 x D&B B6 Subwoofers  
4 x D&B D12 Amplifiers

## MONITORS (CLUB)

4 x B6 Subwoofer  
2 x M4 Tops  
1 x D&B D80 Amplifier

## CONSOLES

Midas Pro 2  
Midas Pro 2c  
Midas DL251 Stage Box x 2  
4 x Cat5e Multicore (House Desk)  
1 x 32A Power for FOH

## LIGHTING

8 x Robe Mega Pointe  
12 x Robe Spider  
6 x Clay Paky Stormy CC  
8 x TMB 2-Cell Molefay  
1 x Chamsys MQ80 Lighting Console  
1 x Chamsys Extra Wing  
3 x 5 Pin Hardline DMX for house control  
1 x Available Cat5e Line  
1 x 16a Power available at FOH

## STAGING

32ft Wide  
20ft Deep  
1.5m High  
Clearance of 4.5m

## RIGGING

3 x Total fabrications Super Heavy Duty Truss  
at 13m as Mothergrid (Locations rear of stage,  
Front of Stage and Back of room)  
Centre Point Loading of 1 Tonne  
UDL 2 Tonne  
2 x Moveable Cranes  
Centre Point Load of 1 Tonne  
UDL 2 Tonne  
Audio Points:  
2 x 1t GIS DB Motor

## STAGE TRUSSING

1 x 10m Milos M390 Rear Truss  
On 2 x 1t GIS DB Motors  
1 x 8m Milos M390 Front Truss  
On 2 x 500kg GIS DB Motors  
We have no Mid Truss for the stage.  
Backdrop Bar is 8m wide 5.5m drop to stage.

## POWER

Lighting Power 125/3 (House Distro)  
63/3 Ceeform from distro for touring lights.

Audio Power 63/3 (House Distro)  
32/3 Ceeform from distro for Touring Audio

13a UK Power available for the stage and at FOH

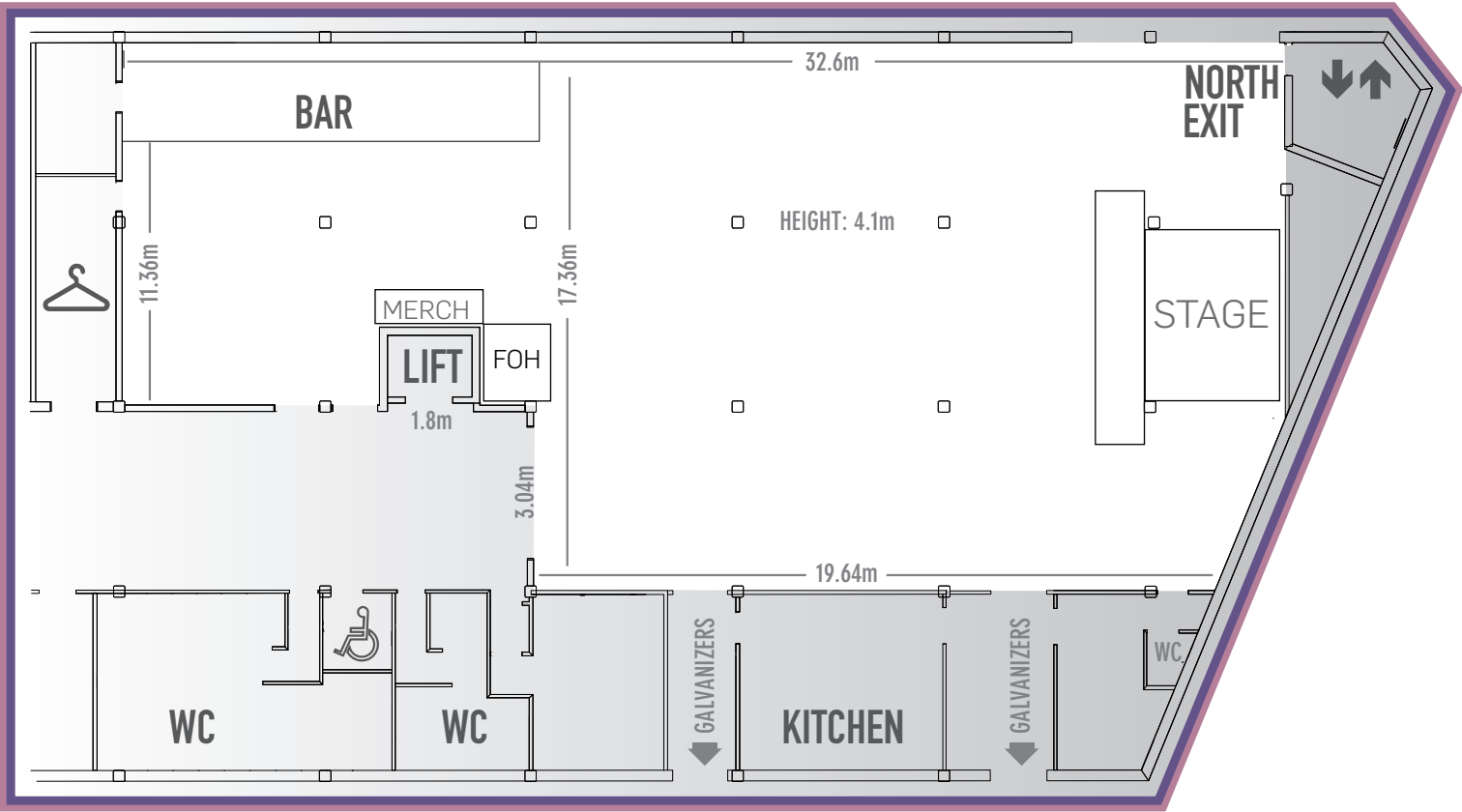
## NOISE RESTRICTION

We have TenEazy Noise monitoring within the Galvanizers due to nearby residents. Our limit within the room at FOH is 100dba over 15 Minutes and 110db Linear at 63hz Octave Band.

Also, due to nearby residents we cannot load out of side of the Galvanizers after 10pm. Load out must be conducted throughout the front of the venue onto Eastvale Place.



# TV STUDIO FLOOR PLAN



## CAPACITY

STANDING	1000
SEATED	300

## STAGING SPECIFICATION

- Stage width 4.9m (16ft)
- Stage depth 3.6m (12ft)
- Stage Ext width 7.3m (24ft)
- Stage Ext Depth 1.2m (4ft)

Height from floor to stage 1m  
Height from stage to ceiling 2.7m

10 x 1m sections of steel Mojo

# TV STUDIO SPEC

## PA

D&B V Series Line Array  
2 x D&B V8 Per Side  
2 x D&B V12 Per Side  
8 x D&B V-SUB Array  
2 x D&B Y7P Front Fill  
2 x D&B Y7P Delays  
2 x D&B 30D Amplifiers  
1 x D&B D80 Amplifier

## Monitors (Live)

8 x D&B M4 Wedges  
2 x D&B B6 Subwoofers  
4 x D&B D12 Amplifiers

## Monitors (Club)

2 x D&B B6 Subwoofer  
2 x D&B M4 Monitors  
1 x D&B D80 Amplifier

## CONSOLES

Midas Pro 2  
Midas Pro 2c  
Midas DL251 Stage Box x 2  
2 x Cat5e Multicore for House Desk

## LIGHTING:

12 x Chauvet Rogue R1 Spots  
8 x Chauvet Rogue R2 Washes  
4 x Martin Atomic 3000  
2 x Source 4 Jr  
1 x Chamsys MQ80 Lighting Console  
1 x 5Pin DMX Line to FOH for House  
1 x 5Pin DMX Line to FOH for Touring

## POWER

3 x 63a Three Phase Socket  
2 x 32a Three Phase Socket  
4 x 16a Socket

Available for touring production

2 x 63/3 Ceeform  
1 x 32/3 Ceeform

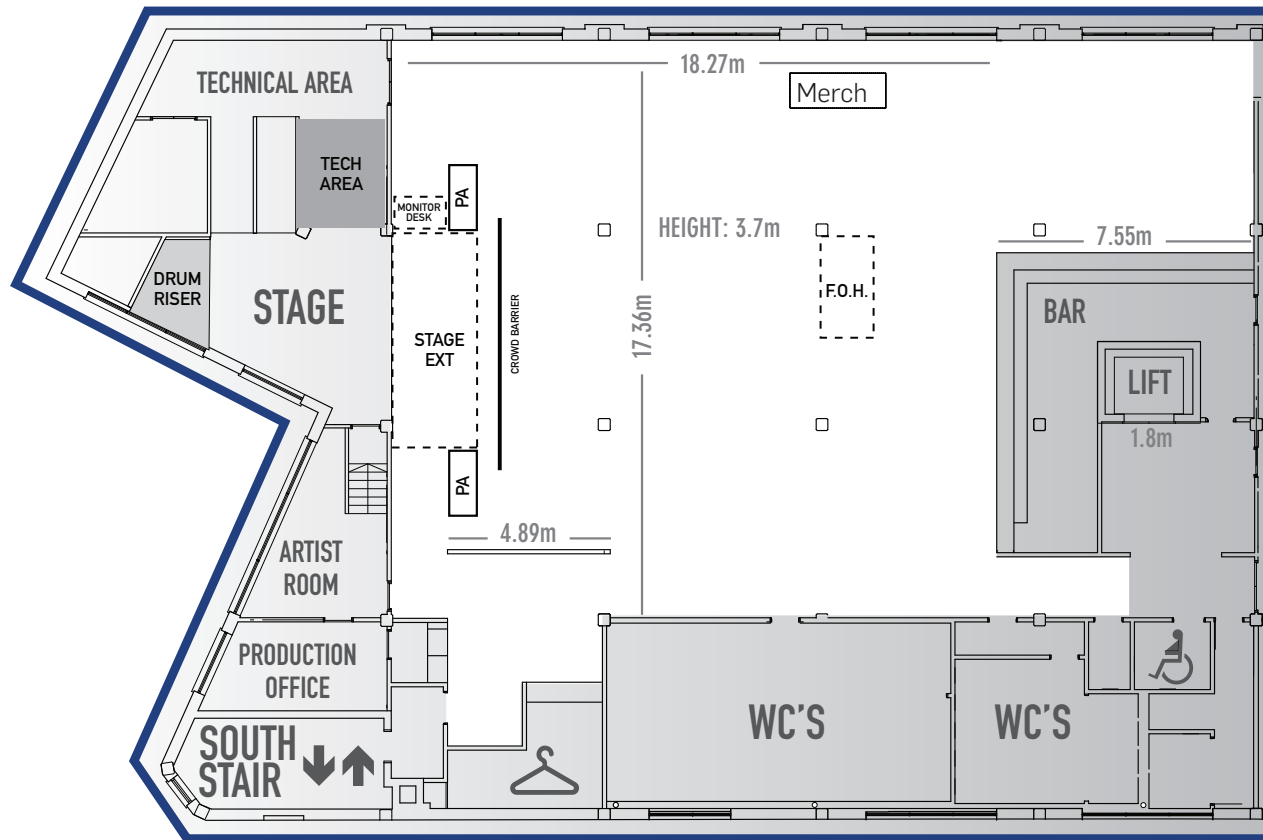
2 x 16a Available at FOH

13a UK power available at Stage and Foh

## RIGGING

6 x Milos Quatro M290V Truss 200kg UDL)  
57 x Scaffold Bars (50kg UDL)  
2 x PA Rigging Point (200kg UDL)  
Backdrop Wire is 4.8m Wide and 2.7m Drop to Stage

# WAREHOUSE FLOOR PLAN



## CAPACITY

STANDING	500
SEATED	180

## STAGING SPECIFICATION

Stage width 5.85m  
 Stage depth 3.8m  
 Drum Riser width 3.2m  
 Drum Riser depth 2.5m

Height from floor to stage 1m  
 Height from stage to ceiling 2.7m

Stage extension with 6 sections of 8'x4' steel deck along the front of the fixed stage.

8 x 1m sections of steel Mojo

Load in for the Warehouse is conducted through the lift from the ground floor.

Lift dimensions:

Door= 1.1 m wide x 1.97m high (3'7" x 6' 6")

Carriage= 1.9m wide x 1.6m deep x 1.9m high (6'4" x 5'6" x 6'6")

Max load = 800kg

For equipment that is larger than these dimensions we have a Production Entrance to the north of the building. 2.4m wide x 2.4m high (8'x 8').



# WAREHOUSE TECH SPEC

## PA

D&B Q Series PA Consisting of:

- 8 x D&B Q1 Tops
- 4 x D&B B2 Subs
- 4 x D&B Q Sub
- 4 x D&B Q7
- 6 x D&B D12

## CONSOLE

- 1 x Midas Pro 1 (Monitors from FOH)
- 1 x Midas DL251 Stage Box
- 3 x CAT5e Multicore

## MONITORS LIVE

- 6 x D&B M4 Wedges
- 4 x D&B D12 Amplifiers
- 1 x D&B B6 Subwoofers

## MONITORS CLUB

- 2 x D&B B6 Subwoofers
- 2 x D&B M4 Monitors

## LIGHTING

- 8 x Chauvet Rogue R1 Spots
- 6 x Chauvet Intimidator Trios
- 2 x Martin Atomic 3000
- 6 x Briteq 6in1 LED Stage Pars
- 1 x Chamsys PC Wing and Touch Screen laptop.

## POWER

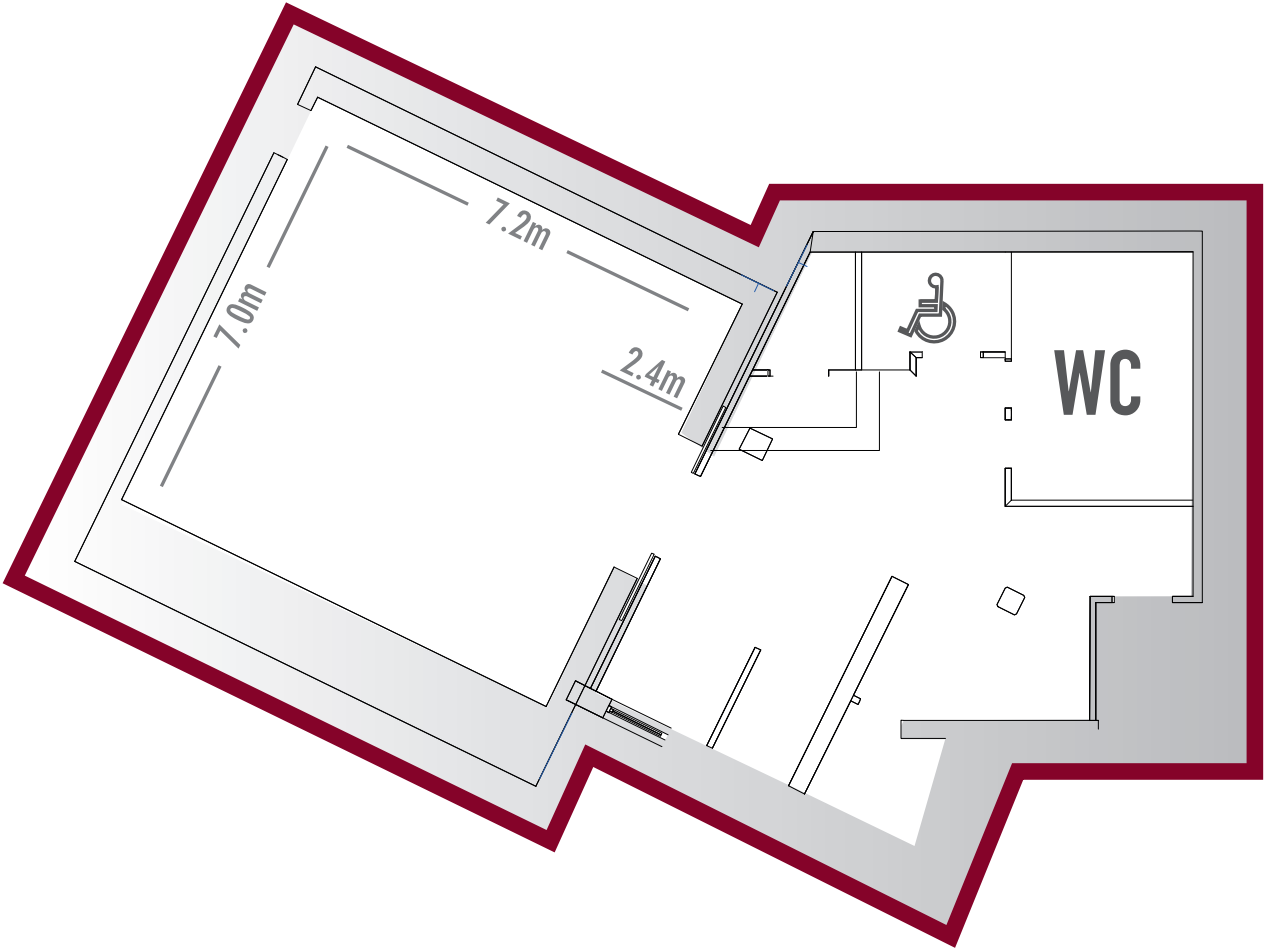
- 1 x 32a Three Phase Socket (Audio Distro)
- 2 x 32a Socket (House Lighting)
- 5 x 16a Socket (House Lighting)

13a and 16a Power Available on stage and at FOH for touring production.

## RIGGING

- 4 x 5m Trilite Truss (120kg UDL)
- 2 x 3m Trilite Truss (90kg UDL)
- 2 x 2m Truss (60kg UDL)
- 20 x Scaffold Bars (40kg UDL)
- 2 x PA Rigging Point (300kg UDL)

# POETRY CLUB FLOOR PLAN



## CAPACITY

CLUB NIGHTS	129
GIGS	100
SEATED	60

## STAGING SPECIFICATION

Stage width  
5.2m  
Stage depth  
1.8m  
Stage height  
0.24m

# POETRY CLUB TECH SPEC

## FOH SYSTEM

- 2 x D&B C6 Top
- 4 x D&B C4 Sub
- 2 x D&B D12
- 2 x EV Evid 4.2 (Bar Area)
- 1 x Midas M32R (16Ch)
- 4 x Stage Monitors

## LIGHTING

- 1 x Zero88 Juggler 12/24 Lighting Desk
- 2 x Lanta Tri LED Par Cans
- 6 x Pulsar ChromaZone CZ6 LED Lights
- 4 x Lanta Saturn Quad Beam
- 2 x Lanta Lasers
- 1 x Martin Atomic Strobe
- 1 x Le Maitre Neutron XS Hazer
- 1 x Antari Z-800 Smoke Machine (Train)
- 2 x Optikinetics Solar 250 (Bar)

## VIDEO

- 1 x 100" 16:9 Projector Screen (Stage)
- 1 x Cannon 2200MP Projector (Bar Area)
- 1 x Sandstrom S22FED12 LED Screen (Cloakroom)

## POWER

- 2 x 16a Socket (DJ Booth)
- 4 x Dual Gang 13a Sockets (DJ Booth)
- 1 x Dual gang 13a Socket (Mezzanine)

## RIGGING

- 6 x Milos Quatro M290V Truss (200kg UDL)
- 5 x Scaffold Bars (40kg UDL)



