

# SWG3

EVENTS GUIDE 2022-23





SWG3 is a world-class arts venue located in Glasgow's West End. SWG3 is home to seven flexible spaces all available for hire, as well as creative businesses, independent shops, galleries and a restaurant.

Every year, the venue grows in both capacity and ambition. SWG3 hosts events spanning live music, global brand activations, club shows, corporate dinners, fashion shows and food festivals. The venue is also the host of the annual Yardworks Festival - the UK's largest celebration of street art.

We welcome over 250,000 visitors a year who come to party, listen, watch and experience. To soak up culture, dine, dance and find inspiration in the arts.

Indoor, outdoor, sweeping or intimate – SWG3 can accommodate every and any event brief, including dry hire and 'no exclusivity' arrangements, whilst also offering a fully qualified production team to assist with operational planning through to logistics and event management.

For over a decade now, SWG3 has been regenerating its 15,000m2 footprint of vacant and derelict buildings into spectacular retail, leisure and event space. The finely tuned mix of business and leisure has created a truly unique venue in Scotland, making the SWG3 complex a destination in its own right and the perfect venue for tailor made experiences.



# CONTENTS

01 GALVANIZERS  
02 TV STUDIO  
03 WAREHOUSE  
04 POETRY CLUB  
05 PHOTO STUDIO  
06 YARD  
07 ACID BAR

CORPORATE  
PRIVATE  
BRANDS  
MUSIC  
ARTS  
LOCATION



# SWG3






## GROUND LEVEL

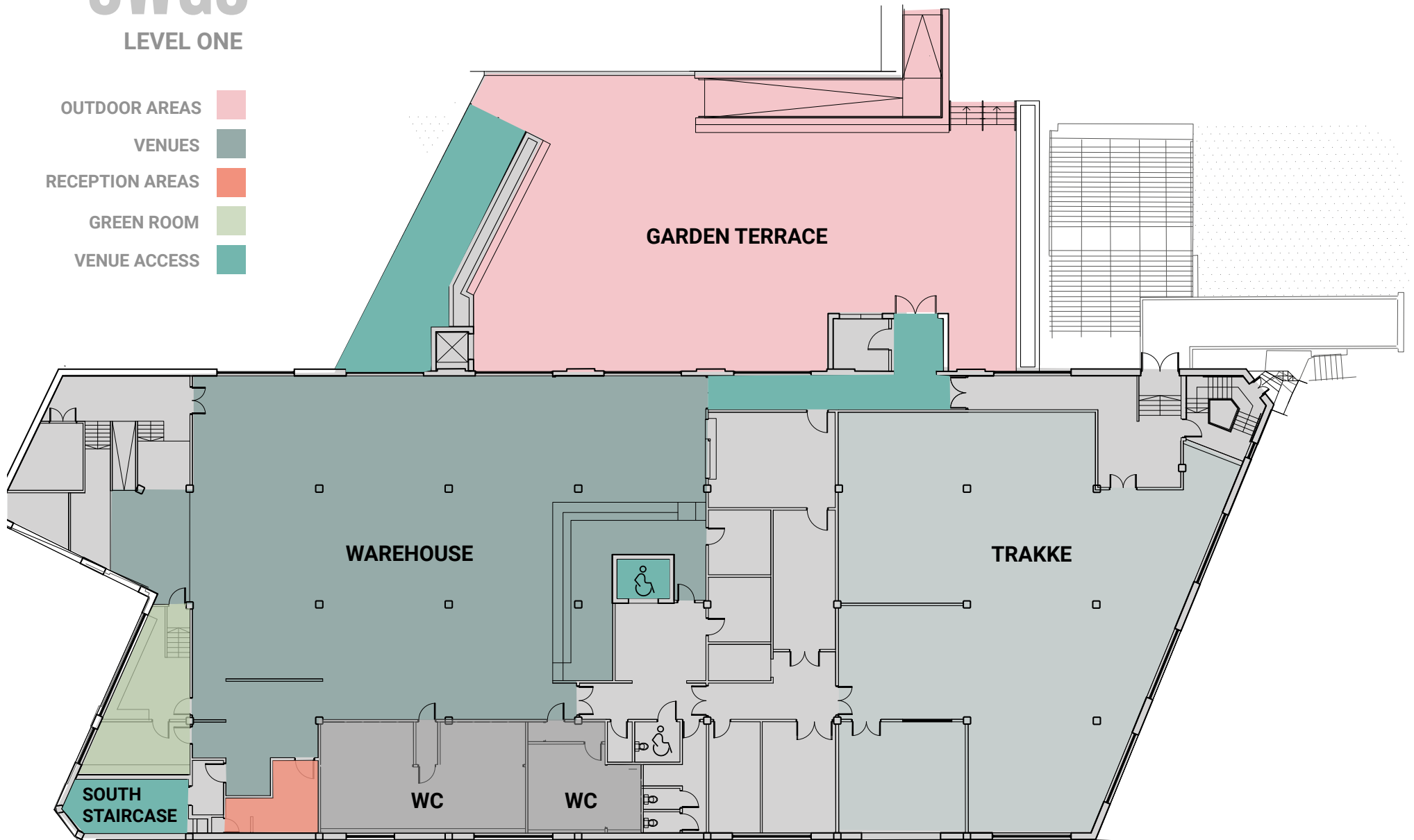
- OUTDOOR AREAS
- VENUES
- RECEPTION AREAS
- GREEN ROOM
- VENUE ACCESS
- YARD



# SWG3

## LEVEL ONE

- OUTDOOR AREAS 
- VENUES 
- RECEPTION AREAS 
- GREEN ROOM 
- VENUE ACCESS 







1

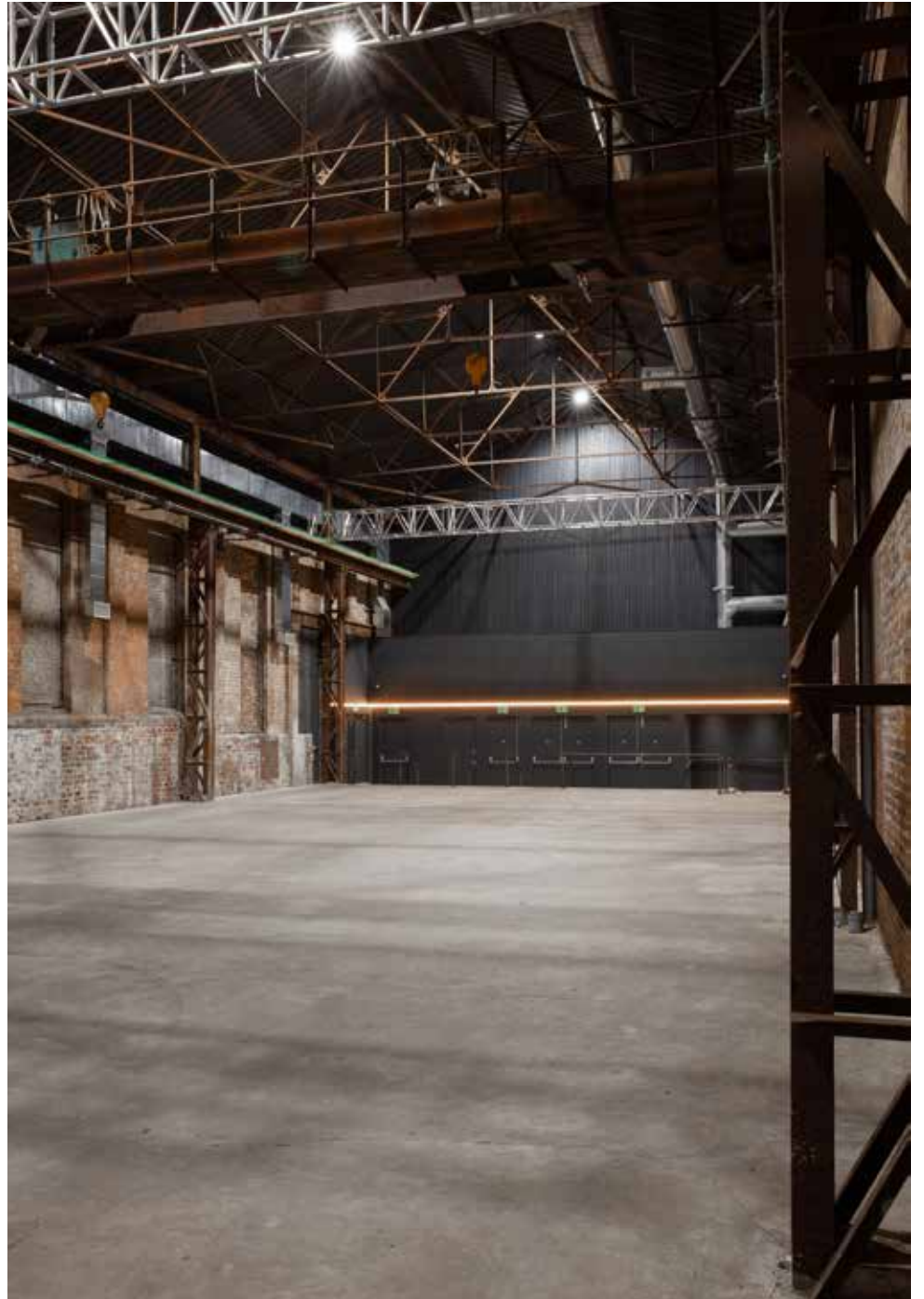
## GALVANIZERS

RECEPTION .....	1300
THEATRE.....	650
DINNER .....	500





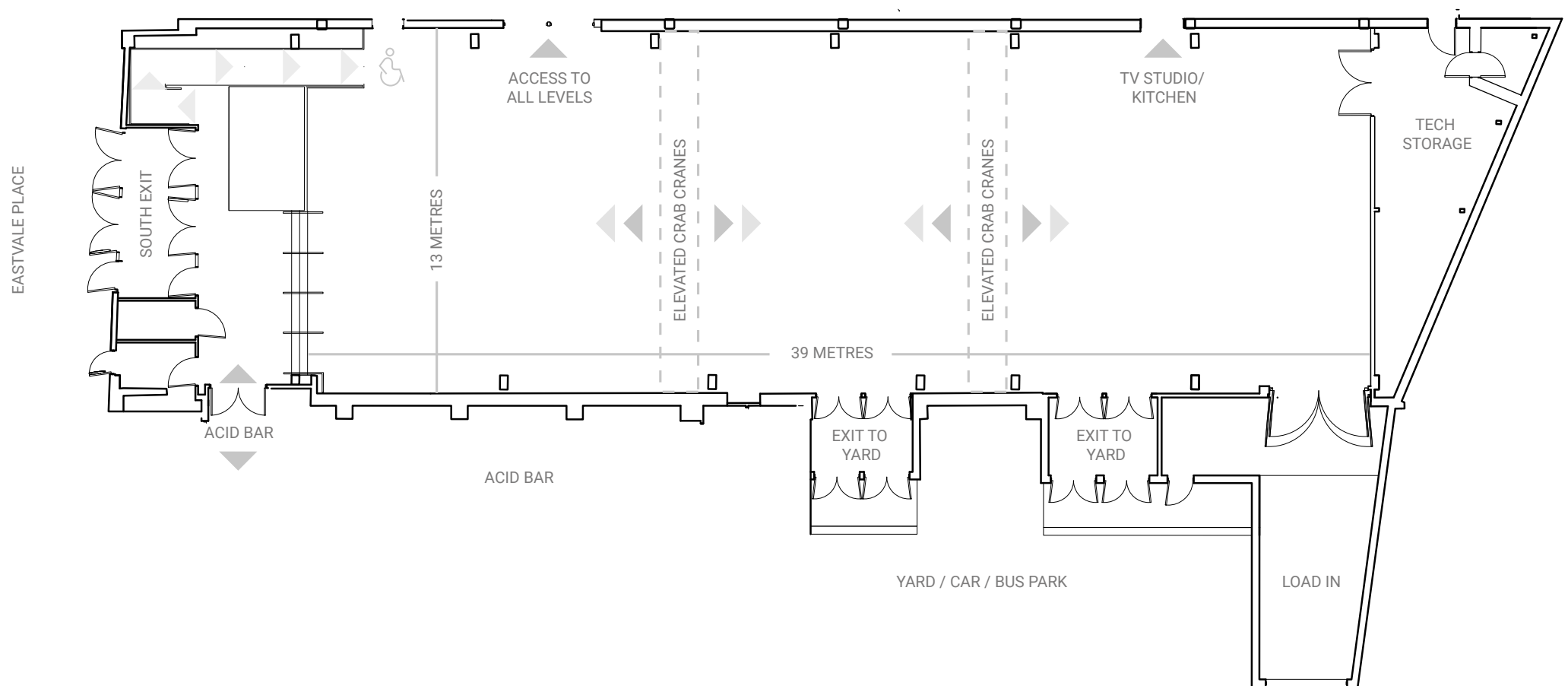






# GALVANIZERS

## VENUE FLOOR PLAN







2

## TV STUDIO

RECEPTION .....	1000
THEATRE .....	450
DINNER .....	300





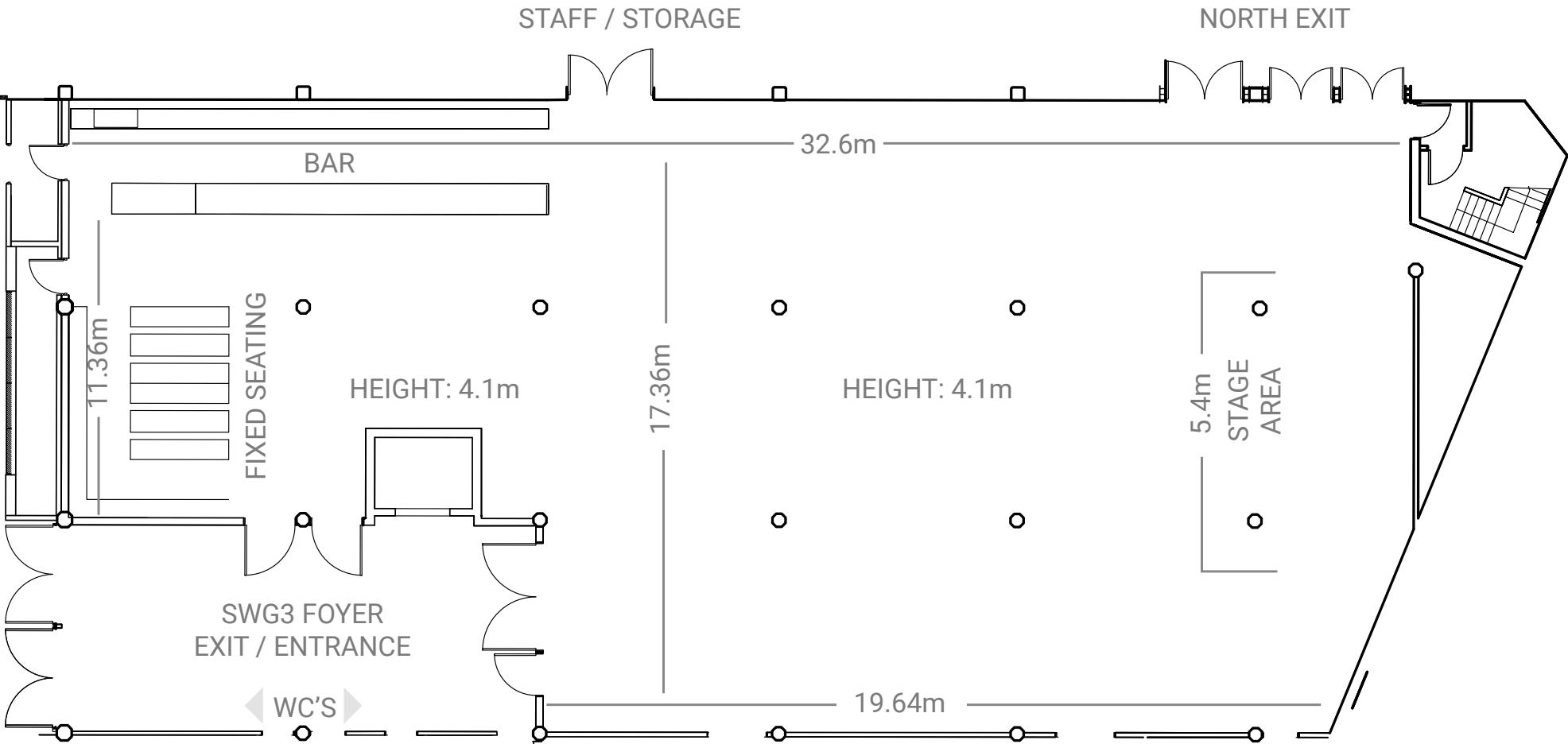






# TV STUDIO

VENUE FLOOR PLAN







3

## WAREHOUSE

RECEPTION .....	450
THEATRE .....	300
DINNER .....	240





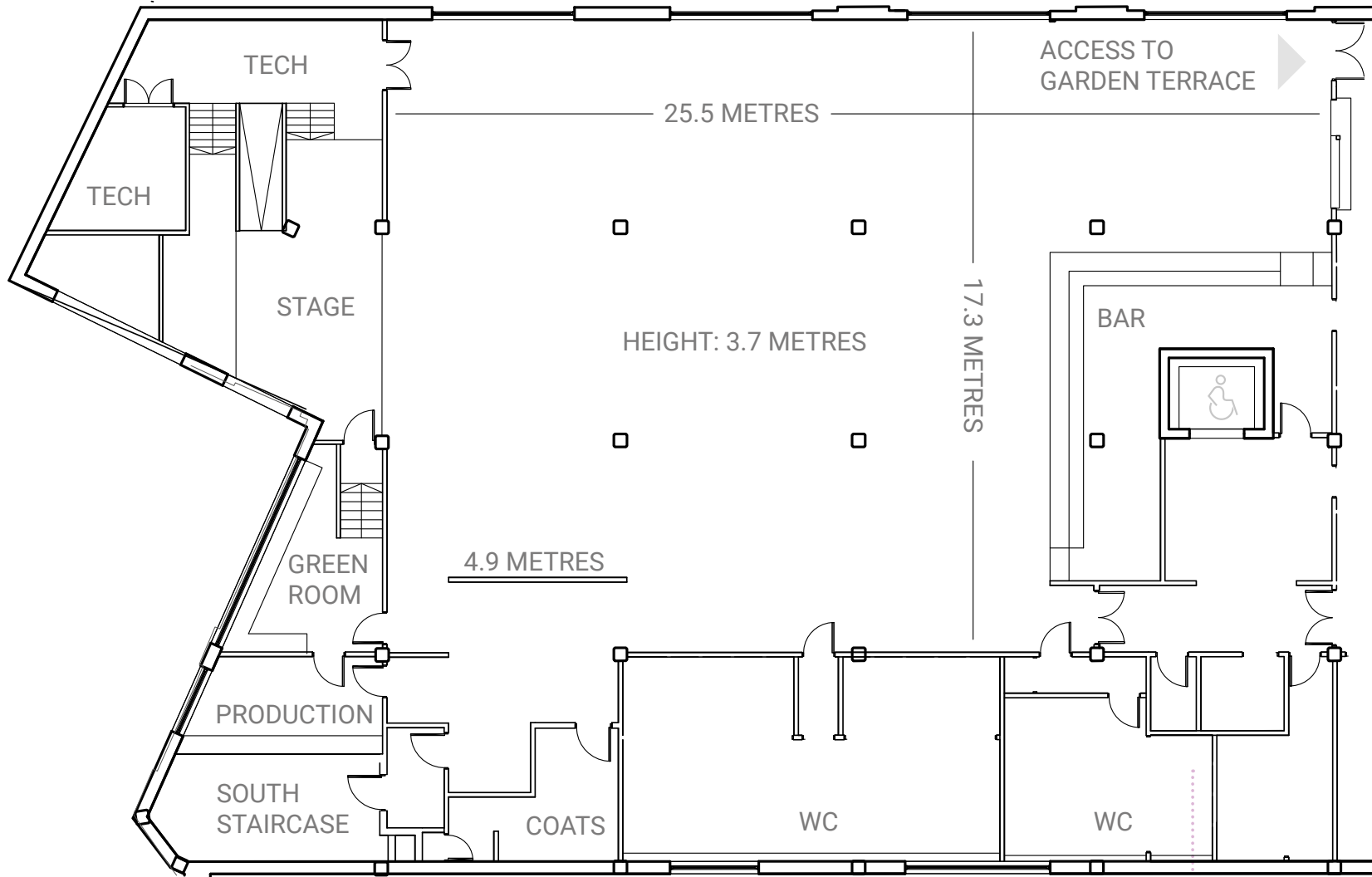






# WAREHOUSE

## VENUE FLOOR PLAN







## POETRY CLUB

RECEPTION ..... 125  
SEATED ..... 40

4





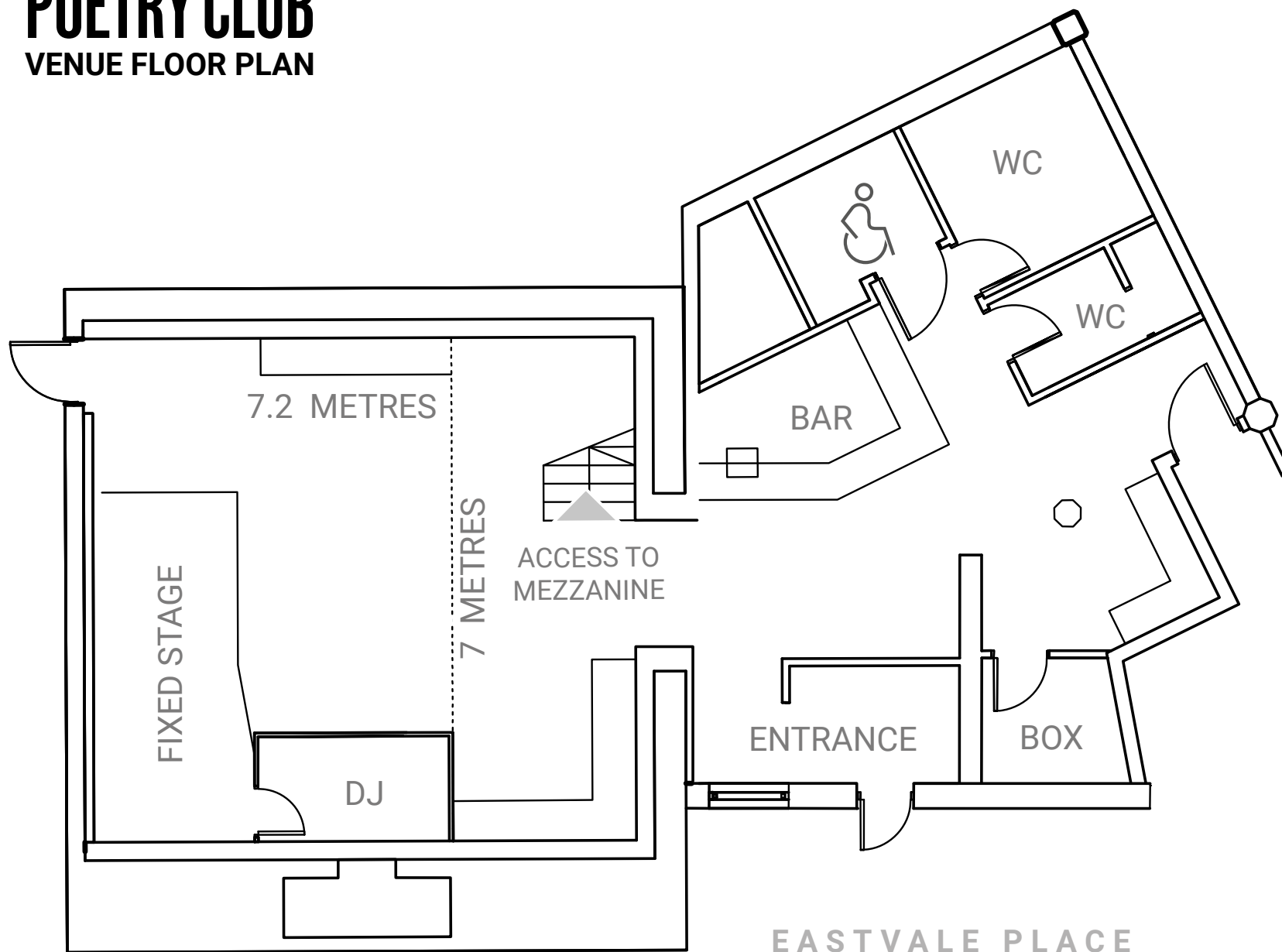






# POETRY CLUB

VENUE FLOOR PLAN





5

## PHOTO STUDIO

RECEPTION .....	120
THEATRE .....	100
DINNER .....	80





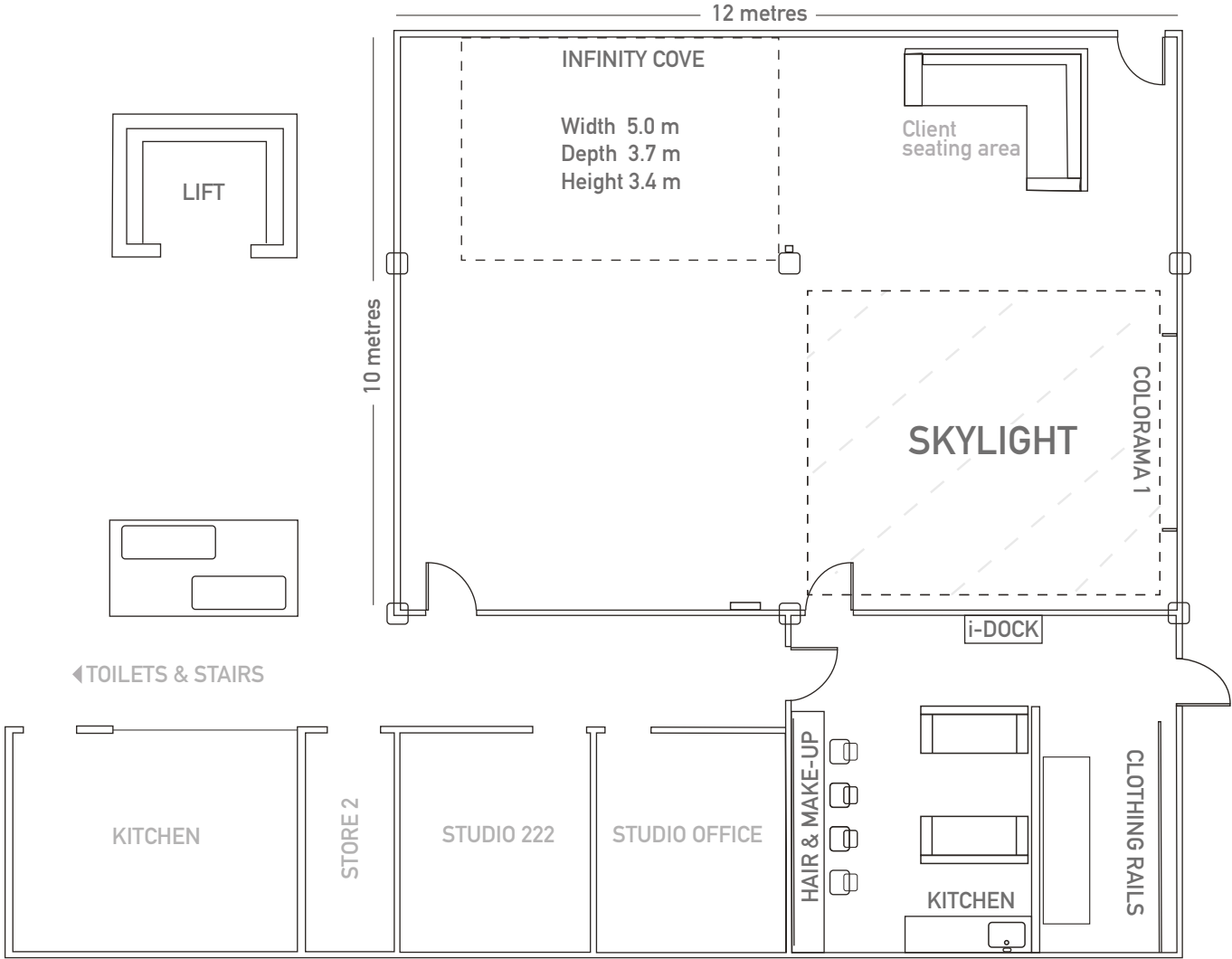






# PHOTO STUDIO

VENUE FLOOR PLAN



6

## YARD

CAPACITY .....4000







**FRONNIER'S**  
BAR & BIKE SHOP

@ellietype

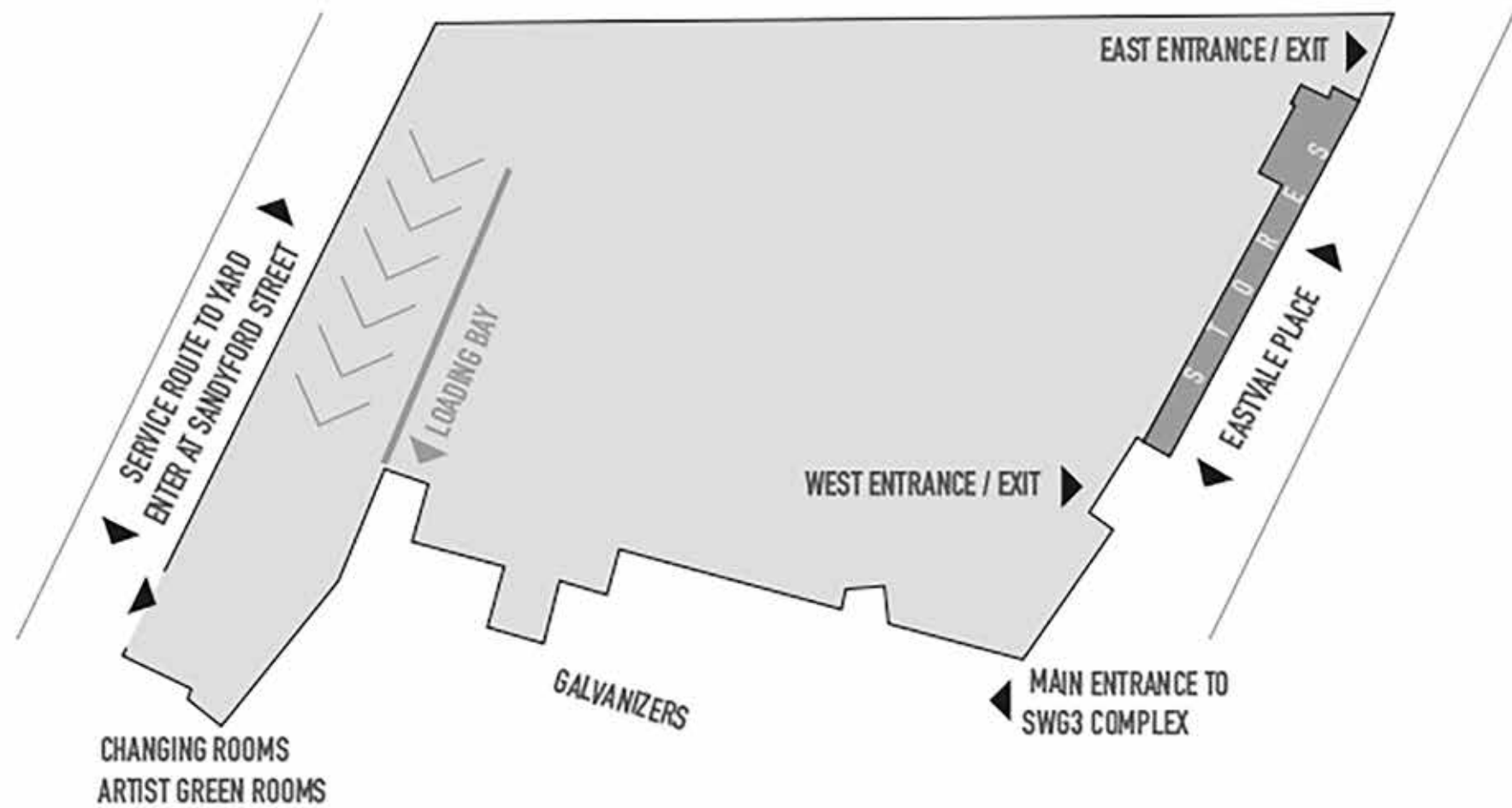














7

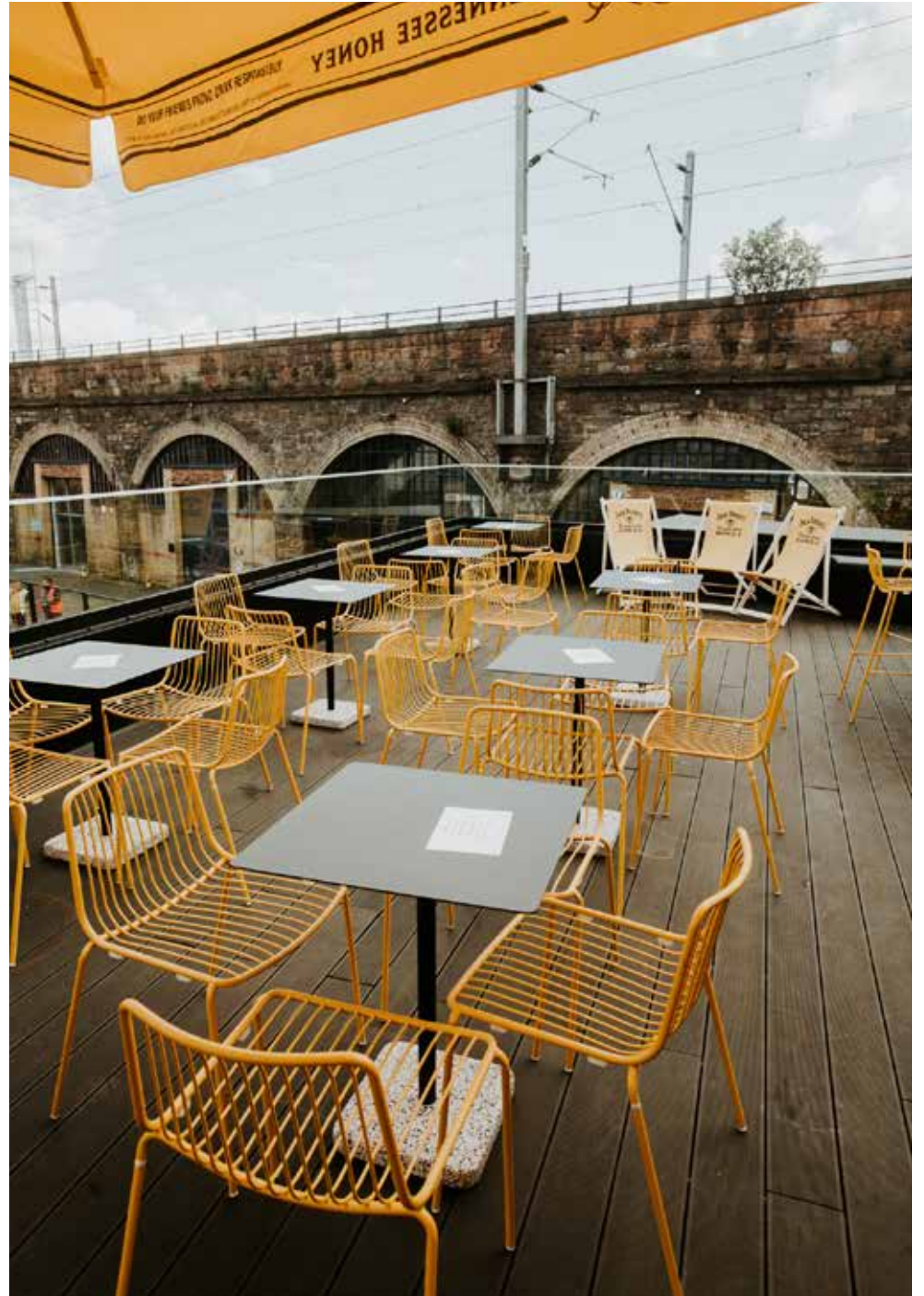
## ACID BAR

RECEPTION .....	150
DINNER .....	50

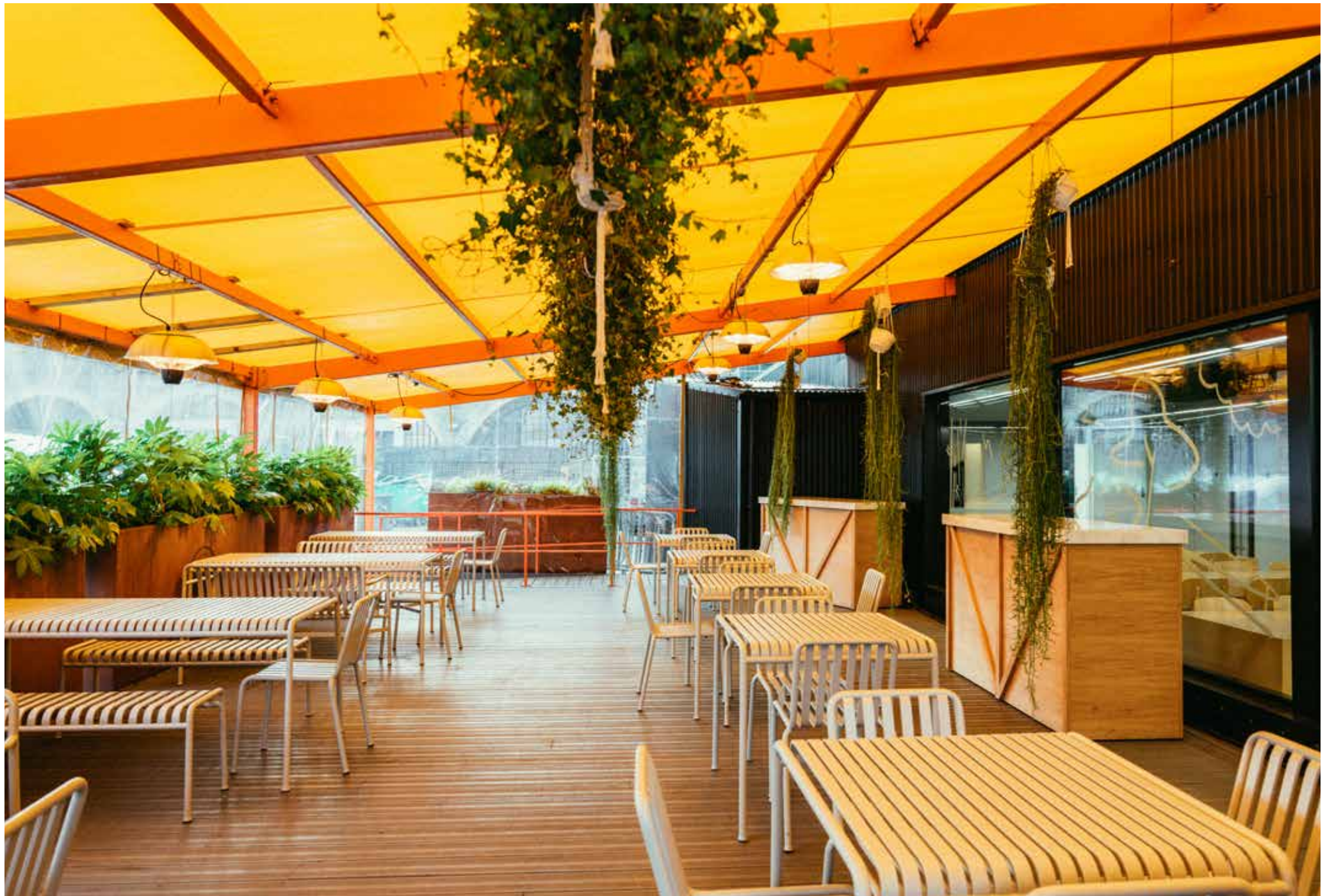








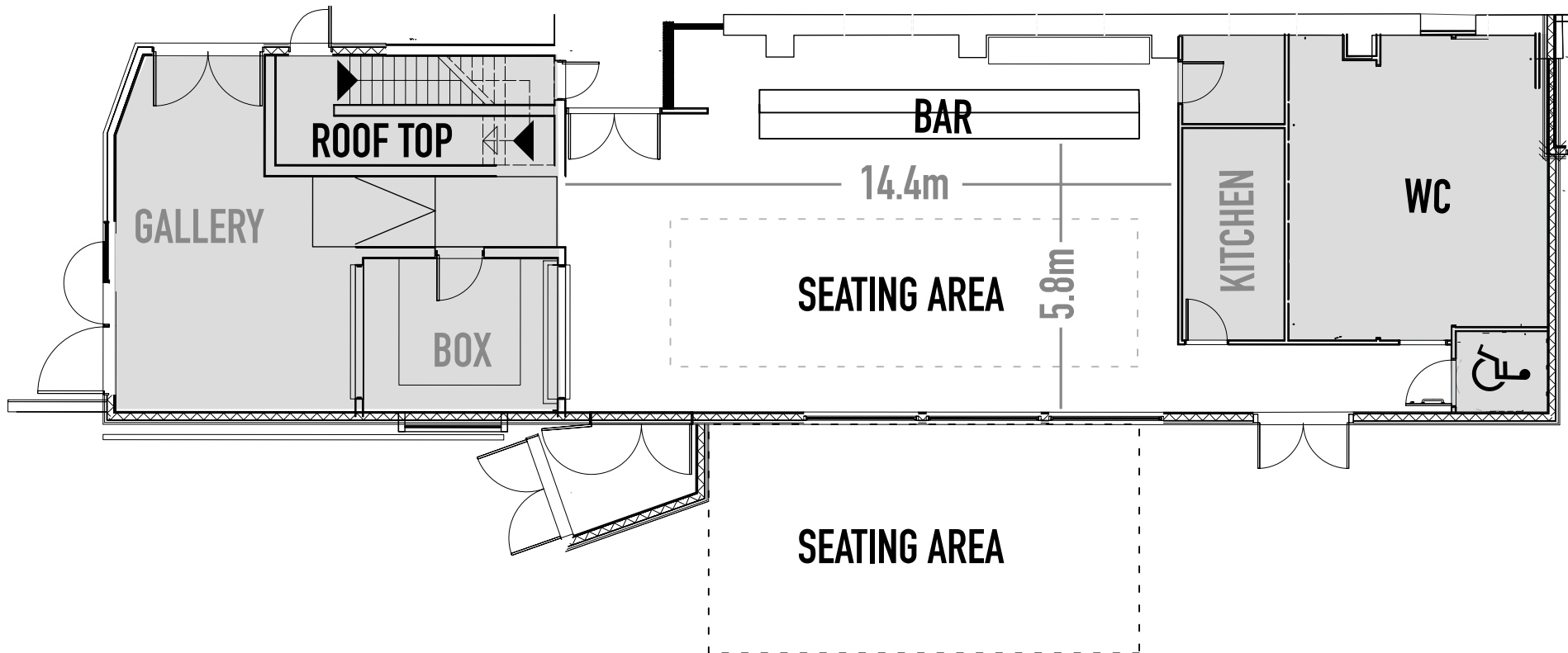






# ACID BAR

VENUE FLOOR PLAN







CORPORATE













**STOP**

**STRONGER  
FOR SCOTLAND**

**BREXIT**





WELCOME TO  
MORTLACH

PRIVATE

















BRANDS















MUSIC





















ARTS









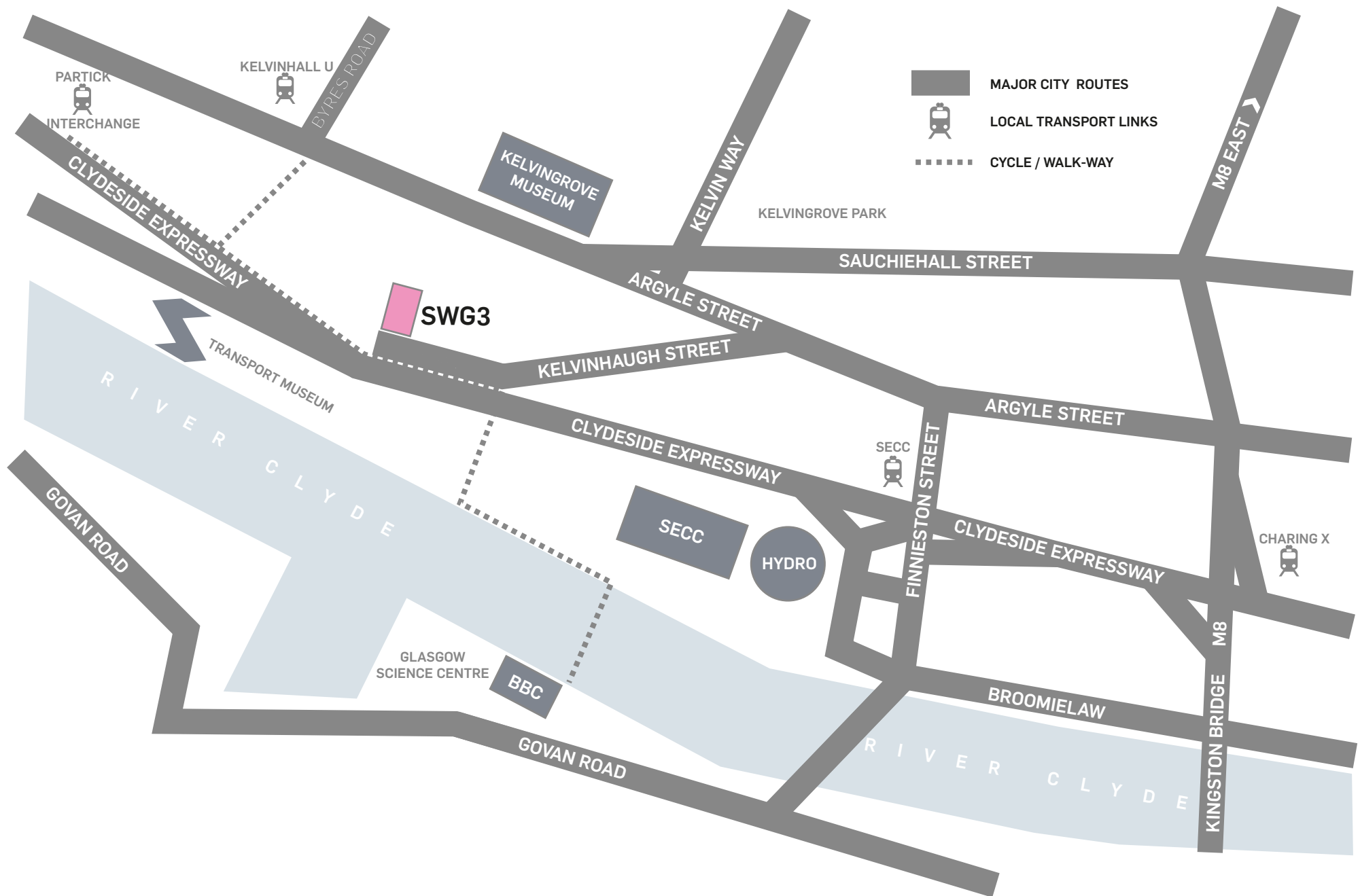
















Meeting rooms  
Desk space  
Breakout areas  
Cafe / Bar  
Dressing rooms  
Shower facilities  
Kitchen  
Catering  
A-C heating  
Lift to all floors  
Free parking  
Industry standard power  
32-Amp shore power  
High speed broadband  
Event Management Team  
Sound Engineers  
Lighting Technicians  
Bespoke event production  
Loading bay  
Drive in access

T: 0141 337 1731  
100 Eastvale Place, Glasgow, G3 8QG

For further information please contact:  
[info@swg3.tv](mailto:info@swg3.tv) [www.swg3.tv](http://www.swg3.tv)



SW03