



'OUR HOME IN THE CITY'

SWG3 Events Guide 2026

SWG3



THE COMPLEX

ABOUT US	3 — 4
FLOORPLANS	5 — 6

THE SPACES

AT A GLANCE	8
GALVANIZERS	9 — 12
TV STUDIO	13 — 16
WAREHOUSE & TERRACE	17 — 22
THE POETRY CLUB	23 — 26
ZINC BAR	27 — 32
GALVANIZERS YARD	33 — 36

THE EVENTS

PREVIOUS EVENTS AND HIRES	37 — 57
GETTING HERE	58

ABOUT US

Located in Glasgow's west end, SWG3 is a world-class leading arts venue. Having first opened its doors just over 20 years ago, SWG3 is home to multiple flexible spaces all available for hire, as well as creative businesses, independent shops, and galleries.

Having grown in ambition, and capacity, year on year, SWG3 has played host to events spanning live music, global brand activations, club shows, corporate dinners, fashion shows and food festivals. The venue is also the host of the annual Yardworks Festival — the UK's largest celebration of graffiti and urban arts. We welcome over 300,000 visitors a year who come to party, listen, watch and experience; to soak up culture, dine, dance and find inspiration in the arts.

Indoor, outdoor, sweeping or intimate, SWG3 can accommodate every and any event brief, including dry hire and 'no exclusivity' arrangements, whilst also offering a fully qualified production team to assist with operational planning through to logistics and event management.





**CORPORATE EVENTS
AND CONFERENCES**



**LIFESTYLE
AND ENTERTAINMENT**



**PRIVATE PARTIES
AND CELEBRATIONS**



**DRINKS RECEPTIONS
AND DINNERS**



**PHOTOGRAPHY
AND FILM SHOOTS**



**BRAND ACTIVATIONS
AND LAUNCHES**



**CULTURAL EVENTS
AND ARTS**



**FESTIVALS
AND MARKETS**

WHAT WE CAN DO

GROUND FLOOR

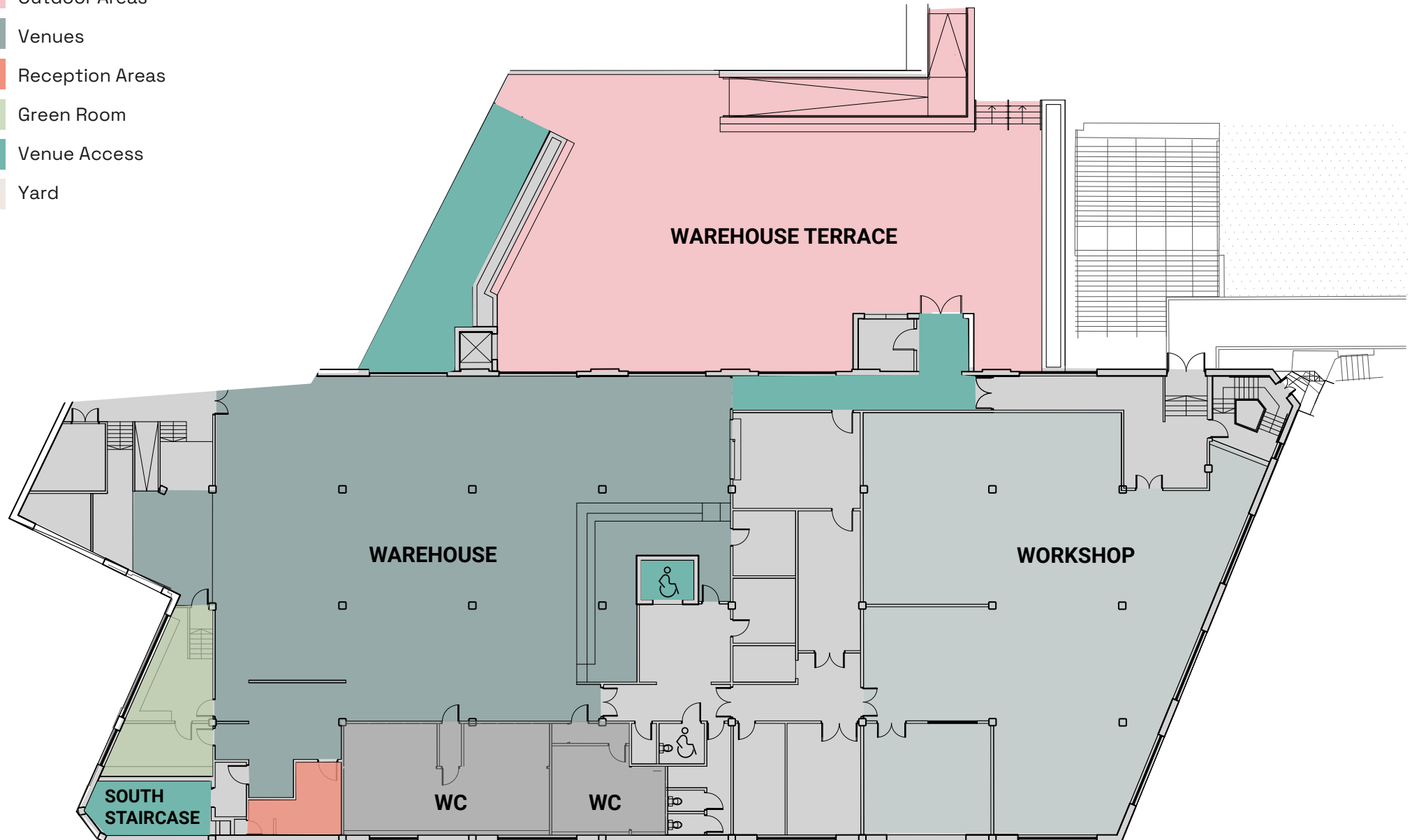
p5

- Outdoor Areas
- Venues
- Reception Areas
- Green Room
- Venue Access
- Yard



LEVEL ONE

- Outdoor Areas
- Venues
- Reception Areas
- Green Room
- Venue Access
- Yard

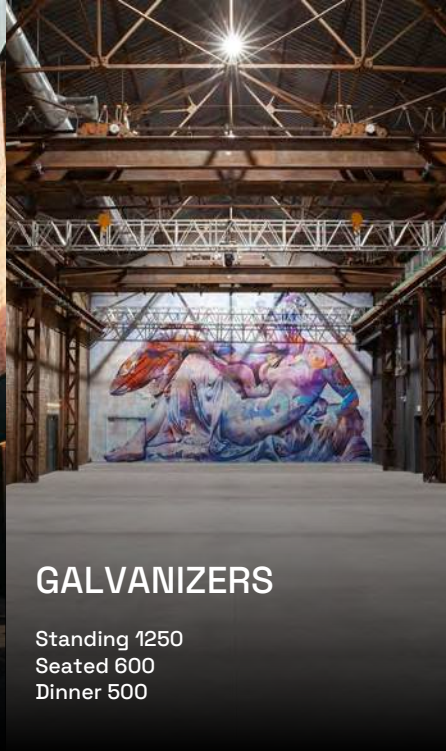


OUR SPACES



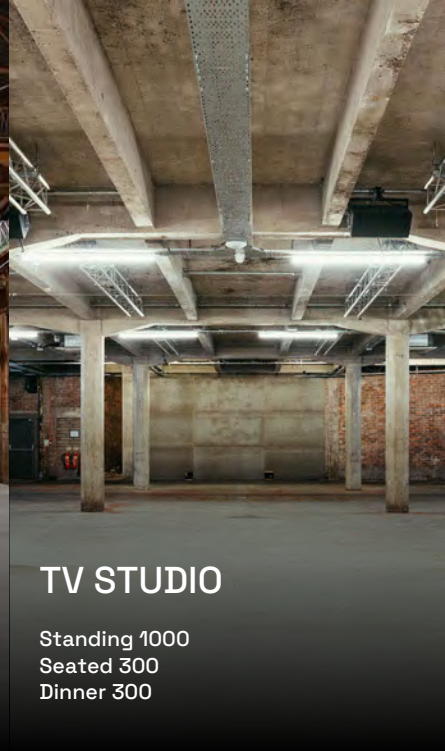
FULL COMPLEX

Nine diverse, versatile spaces with capacities from 100 — 4200, spanning indoors and outdoors



GALVANIZERS

Standing 1250
Seated 600
Dinner 500



TV STUDIO

Standing 1000
Seated 300
Dinner 300



WAREHOUSE & TERRACE

Standing 500
Seated 200
Dinner 240



THE POETRY CLUB

Standing 125
Seated 40

PLEASE NOTE THAT ALL CAPACITIES ARE SUBJECT TO EVENT PRODUCTION AND MAY CHANGE DEPENDING ON EVENT REQUIREMENTS



WORKSHOP

Standing 100
Seated 100
Dinner 60



ZINC BAR & TERRACE

Standing 150
Dinner 50



GALVANIZERS YARD

Standing 4200



GARDEN

3,200m² of greenspace, plus a seated terrace area



YARDWORKS STUDIO

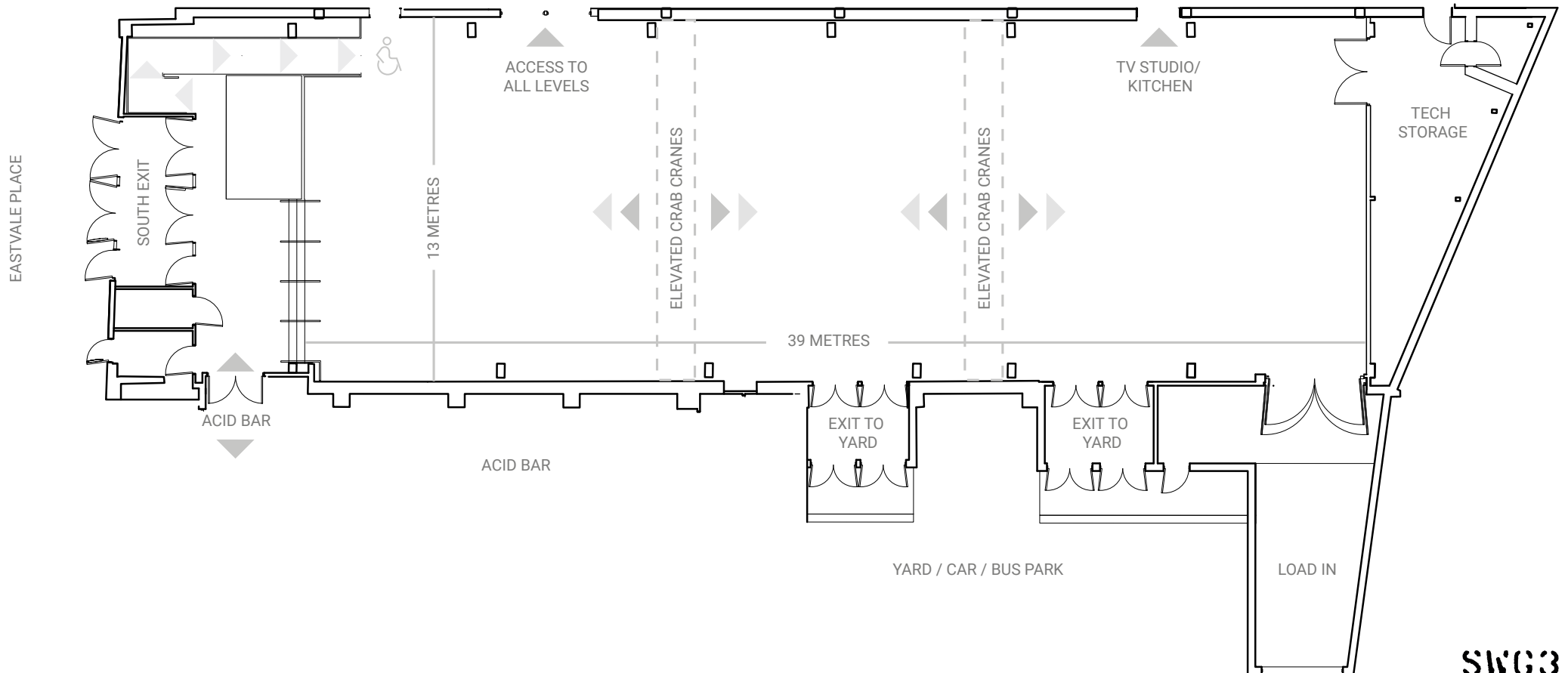
A 6-metre wall for graffiti and painting, plus meeting rooms and event spaces

GZ

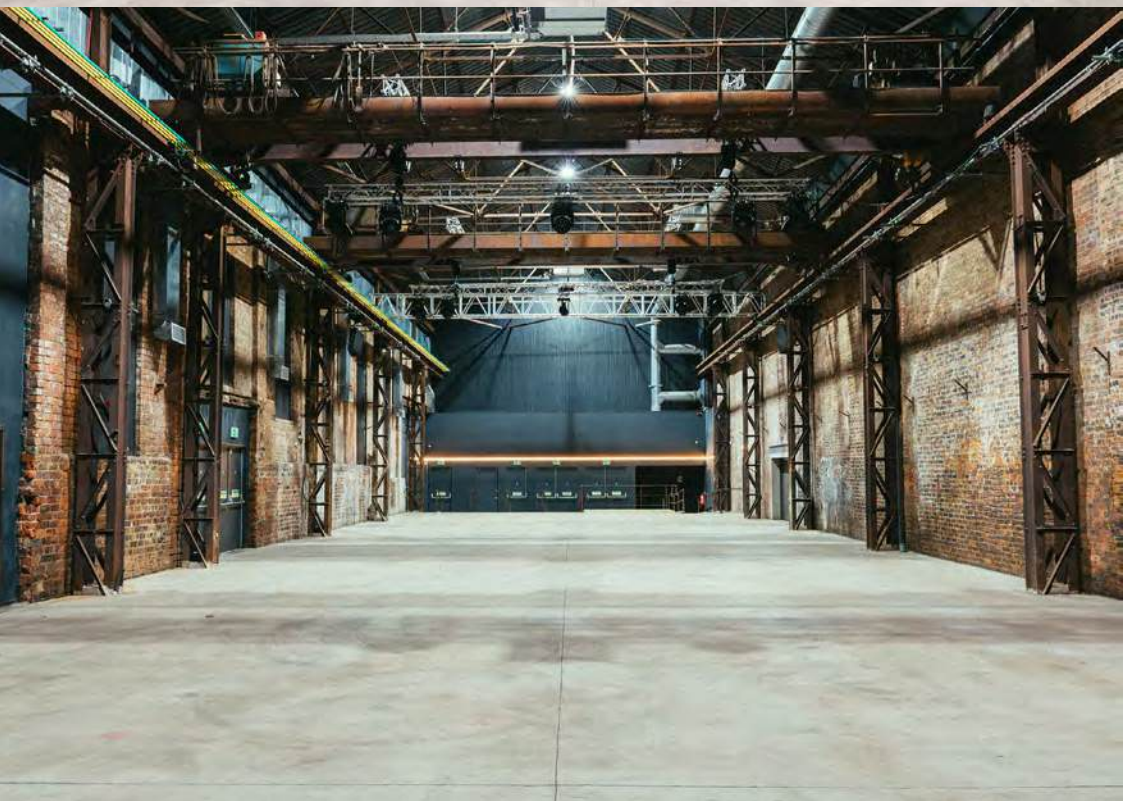
GALVANIZERS

p9

Standing 1250 | Seated 600 | Dinner 500







Our beloved Galvanizers: a regular home to some of the most exciting events in the city, and so much more. Previously home to the sound of pounding steel and industry, it's the perfect blank canvas — with 6000 square feet of concrete, iron and steel, waiting to be hired and transformed to suit your needs.

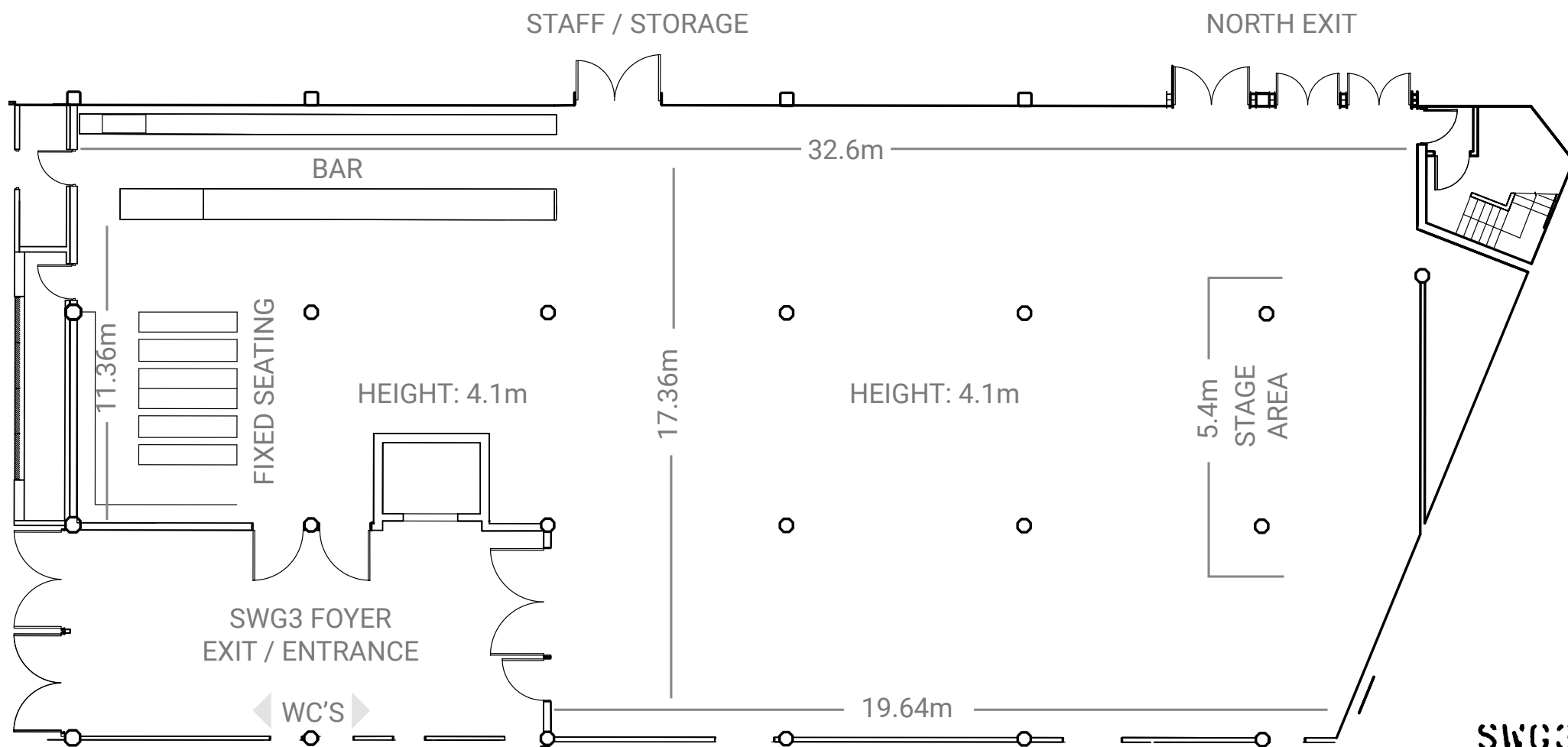


TV

TV STUDIO

p13

Standing 1000 | Seated 300 | Dinner 300







Originally beginning life as a place for production shoots, the TV Studio is now one of the most unique event venue spaces available to hire in Glasgow, capable of holding up to 1000 people with its distinctive concrete pillars, exposed brickwork, a generously long bar and atmosphere dripping from the walls.

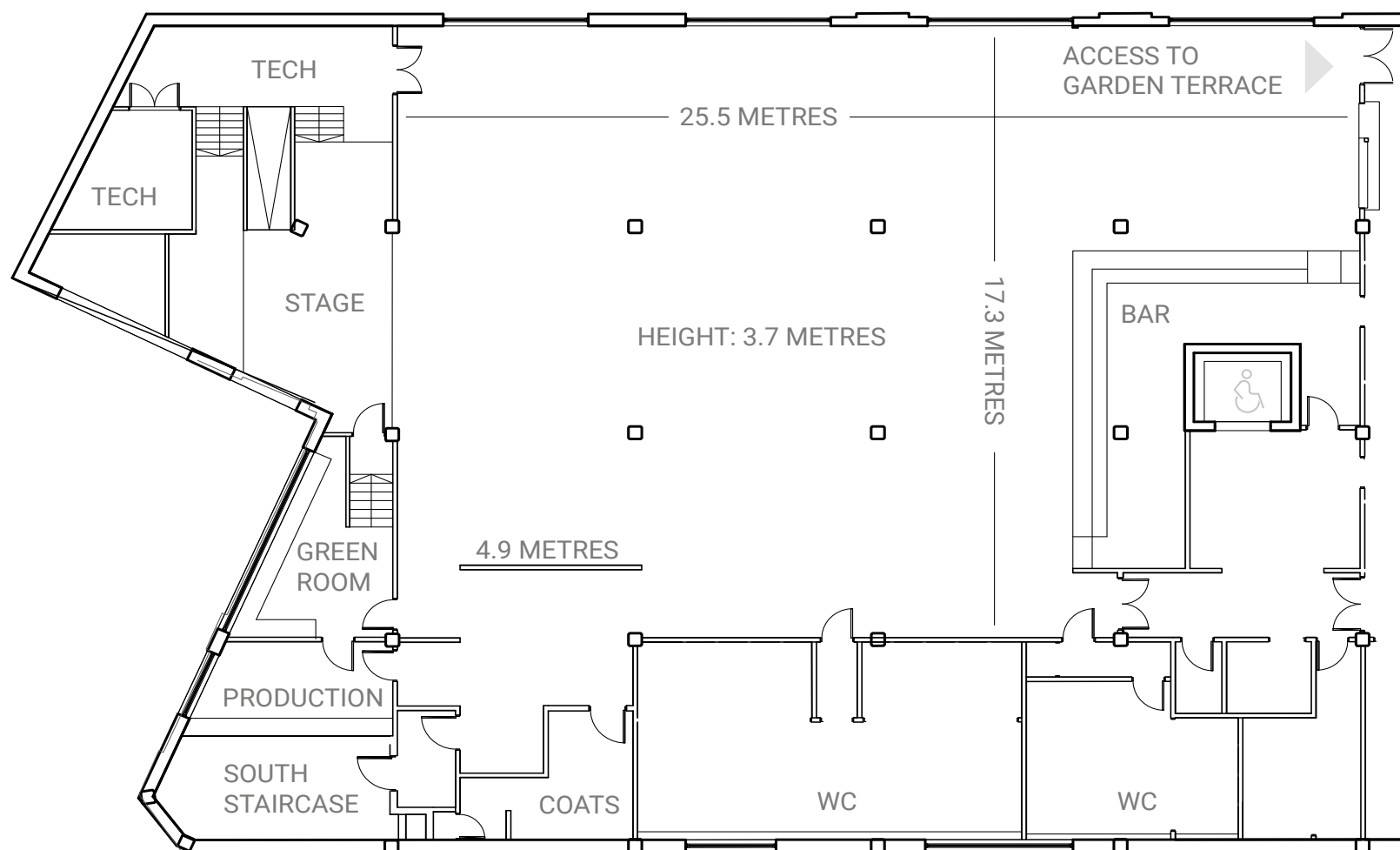


WH

WAREHOUSE & TERRACE

p17

Standing 500 | Seated 200 | Dinner 240



SWG3









From its storied early days as a word-of-mouth rave space, the Warehouse has grown up to become one of the city's best-loved event venue spaces for hire – having played host to dinners, launches, screenings, photography shoots, 48-hour live art performances and everything in between, all overlooking Yorkhill and entry out onto our terrace bar and garden space.

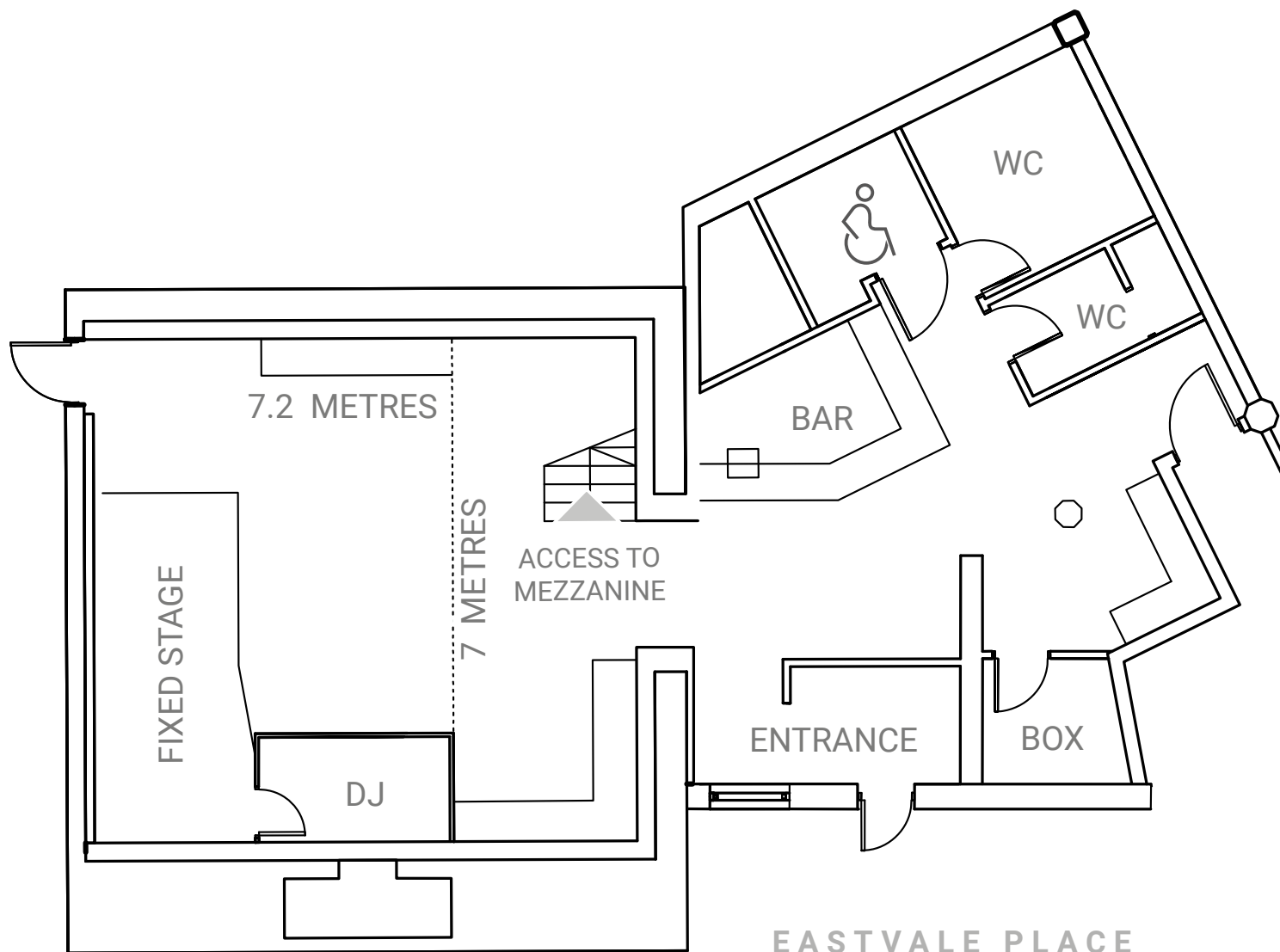


PC

POETRY CLUB

p23

Standing 125 | Seated 40



SWG3





A space co-founded between SWG3 and iconic artist Jim Lambie, The Poetry Club is a haven for smaller gigs, film screenings, zine launches, private parties, and more. Capable of holding 125 people, and adorned in Lambie's art, it is one of the most unique event spaces available for hire in Glasgow.

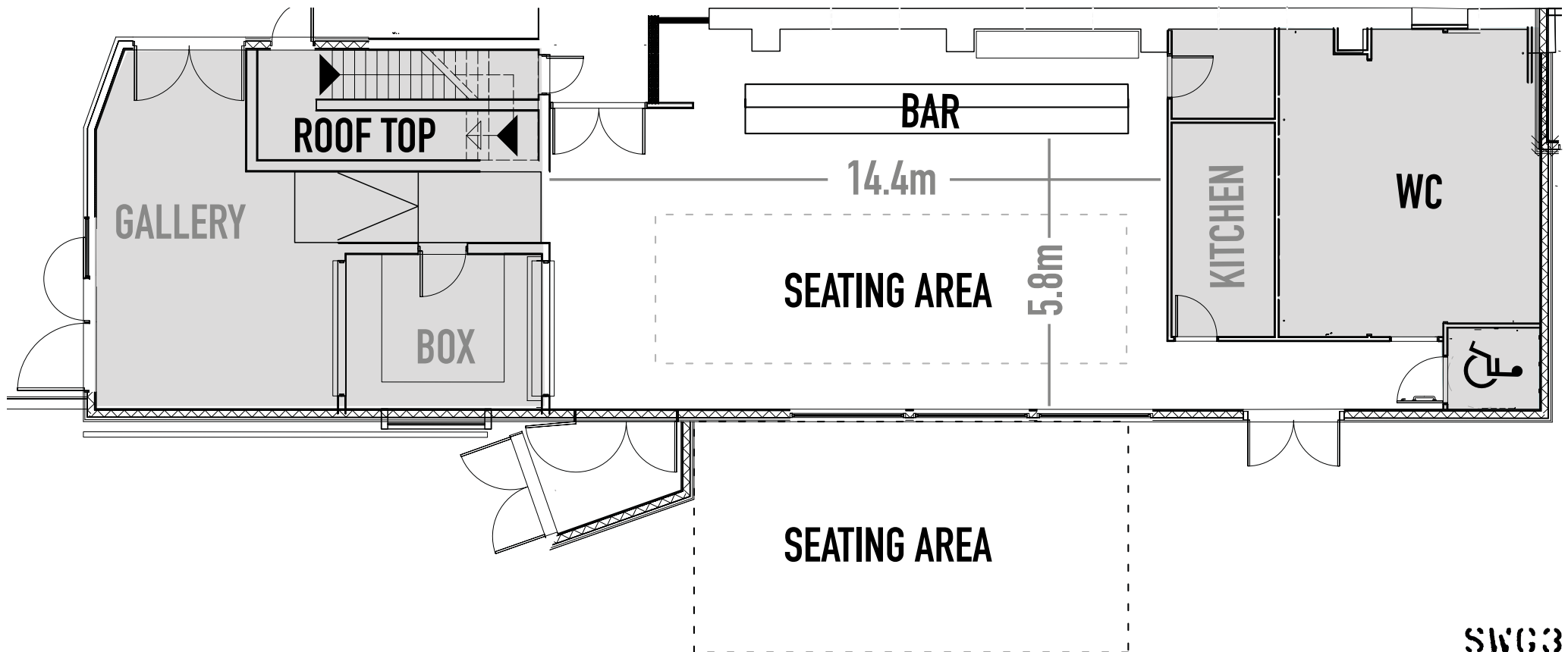


ZB

ZINC BAR & TERRACE

p27

Standing 150 | Dinner 50



SWG3









A daytime spot for meetings, coffees and people-watching, the Zinc Bar is home to a rotating constellation of residencies, and exhibitions showcasing some of Glasgow's best contemporary art. Light, spacious and stylish, it's an ideal event space to hire for meetings, private functions, dinners and other events.

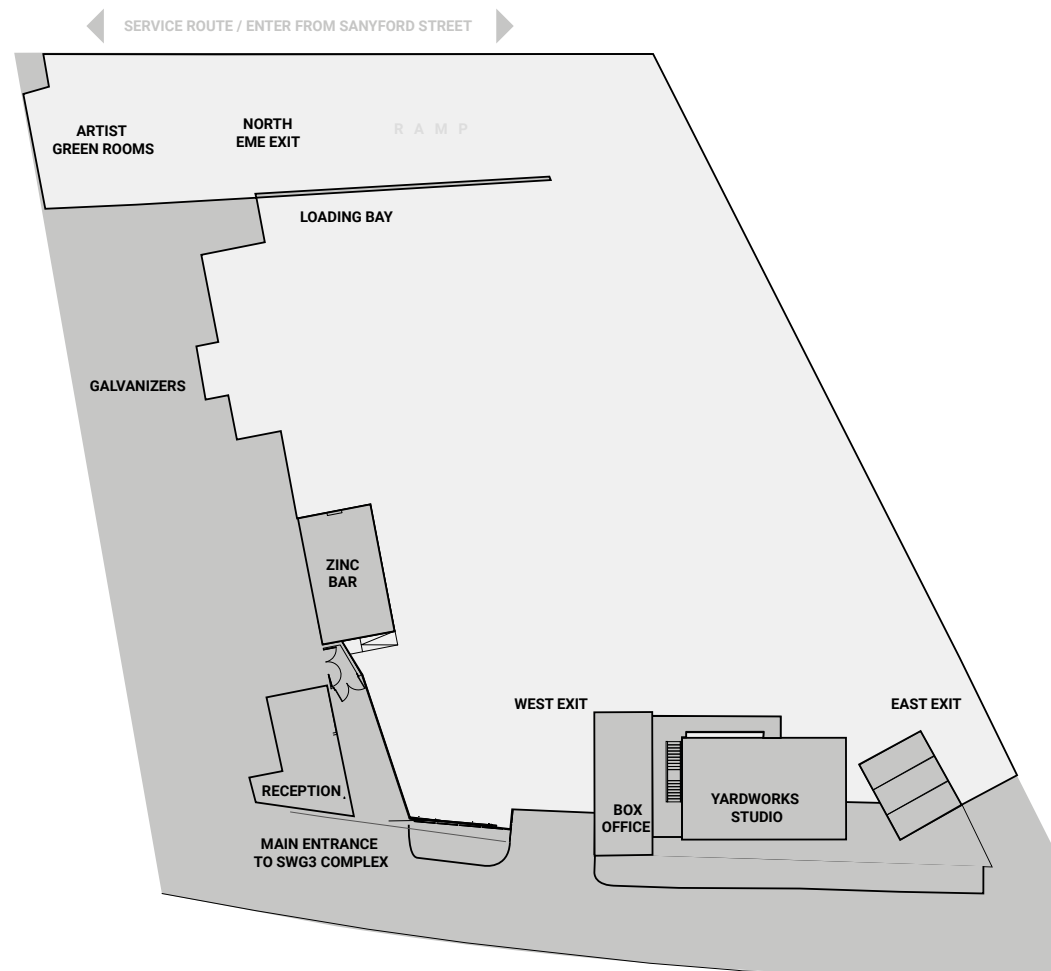


YD

GALVANIZERS YARD

p33

Standing 4200



SWG3



SWG3



The former site of the Clydeside Galvanizers, the Galvanizers Yard's 25,000 square feet have years of history and industry built into its foundations. Now, it has been transformed and is capable of hosting up to 4000 people, making it one of Glasgow's key outdoor event spaces to hire.



WHAT WE'VE DONE



The New York Times
Climate Hub

THE NEW YORK TIMES CLIMATE HUB

GALVANIZERS & WAREHOUSE





DIAGGIO WORLD CLASS

ZINC BAR TERRACE



AMAZING PEOPLE AWARDS

GALVANIZERS



HARLEY HADDOW 75TH BIRTHDAY PARTY

WAREHOUSE



WEDDING RECEPTION

WORKSHOP



TENNETS TRADE SHOW

FULL COMPLEX



MEATOPIA

FULL COMPLEX



EDDIE'S DIVE BAR

FULL COMPLEX



DJ HEARTSTRING

GALVANIZERS



GLITTERBOX

GALVANIZERS YARD



THE XX

GALVANIZERS YARD



LOYLE CARNER

GALVANIZERS YARD



BIFFY CLYRO

GALVANIZERS

A photograph of a bodybuilding competition stage. Eight muscular men in various colored briefs are posing on a stage. Behind them is a large blue backdrop with the 'PCA PHYSICAL Culture' logo and website 'www.pcaofficial.com' repeated. The stage is lit with blue spotlights, and a complex rig of stage lights is visible above. The text 'PCA BODYBUILDING CHAMPIONSHIP' is overlaid in large white letters.

PCA BODYBUILDING CHAMPIONSHIP

GALVANIZERS



REPRESENTS POP UP SHOP

GALVANIZERS



GLASGOW INTERNATIONAL

FULL COMPLEX



GLASGOW INTERNATIONAL

FULL COMPLEX



GSA FASHION SHOW

GALVANIZERS



YARDWORKS FESTIVAL

GALVANIZERS YARD Plus



YARDWORKS FESTIVAL

GALVANIZERS YARD

GETTING HERE

SWG3 is located at 100 Eastvale Place, Glasgow, G3 8QG, and is easy to get to on foot, by car or by public transport.

BY TRAIN AND SUBWAY

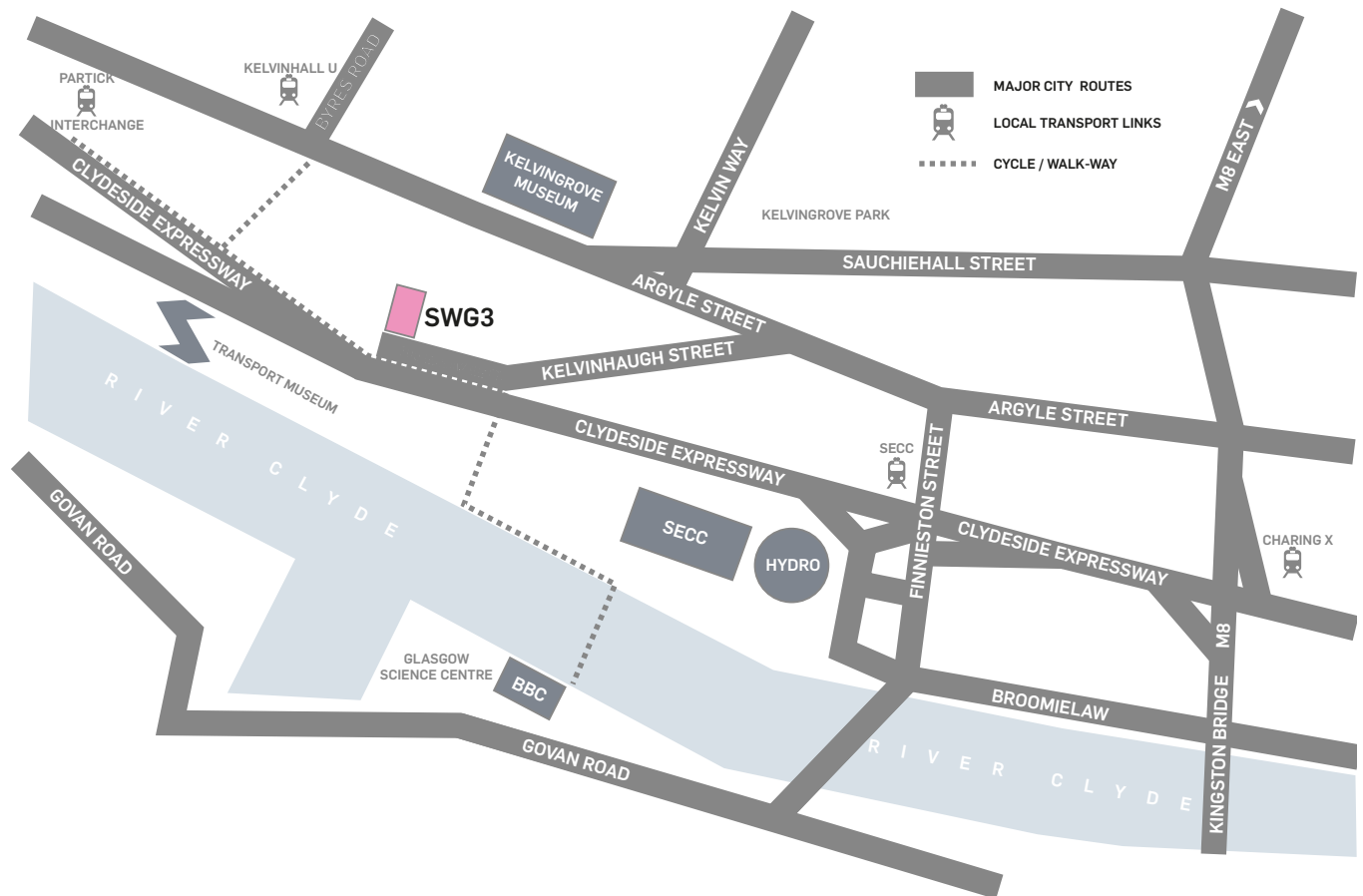
The nearest travel hub is Partick Interchange, which has a subway station and regular trains from Glasgow Central Station. From here, it's a 10 minute walk alongside the Expressway.

BY CAR

There is metered on-street parking on Kelvinhaugh Street and the surrounding streets leading up to the venue. The nearest car park is at Riverside Museum, which is a 10 minute walk away.

BY BIKE

Voi e-bikes are in operation across the city. You can find out more info and download the app [here](#). The nearest station to the venue can be found on the corner of Kelvinhaugh Street and Yorkhill Street. Bikes will not be permitted on site, so please lock up before arriving. We have a double height covered bike store next to reception.





SWG3