

SWG3

PRODUCTION SPEC 2018-19

SWG3

WELCOME TO SWG3 GLASGOW

We hope that you have an enjoyable visit with us and look forward to your upcoming show. In order to make the day run as safely and smoothly as possible, we would ask that you take some time to read through this Production Information pack and the Health & Safety pack and in turn, supply us with your touring H&S pack. We would also appreciate it if you would pass this on to all relevant staff on your production.

PARKING

There is free parking along Eastvale Place and vehicles can park outside the venue and at the western extremity of the street until 18:00. Please inform us of your arrival time so we can have shore power available. Shore power is 32amp 3-phase.

VEHICLE ENTRANCE DIMENSIONS

3.45m wide x 3.0m high (12' x 10.5')

LOADING INFORMATION

Access to the lift is through the Vehicle Entrance of the building. Any vehicles larger than these dimensions should park directly outside and it is a short push to the lift, located 20m inside the building on the left hand side. The Warehouse is on the 1st floor.

LIFT DIMENSIONS

Door= 1.1 m wide x 1.97m high (3'7" x 6' 6")

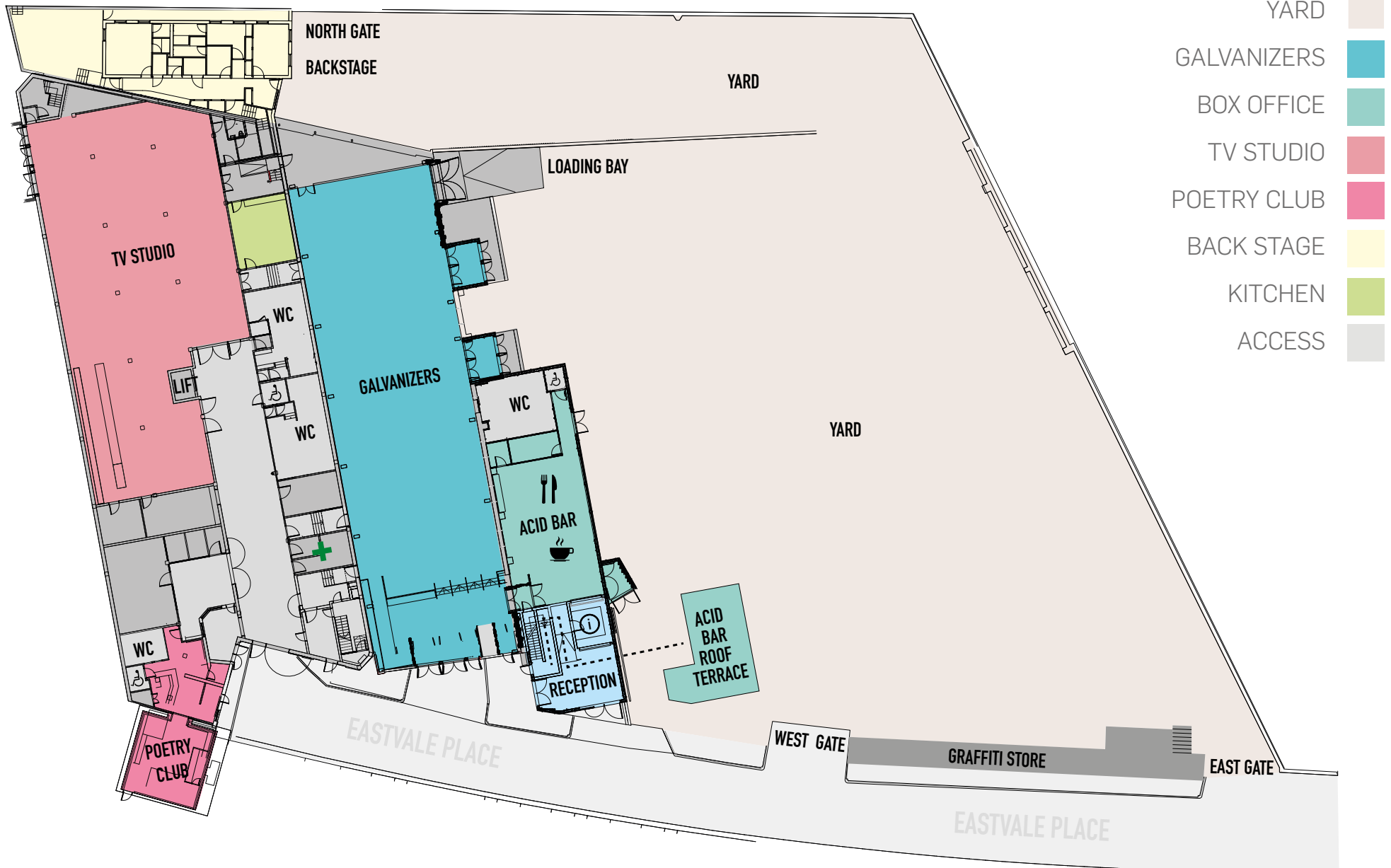
Carriage= 1.9m wide x 1.6m deep x 1.9m high (6'4" x 5'6" x 6'6")

Max load = 800kg

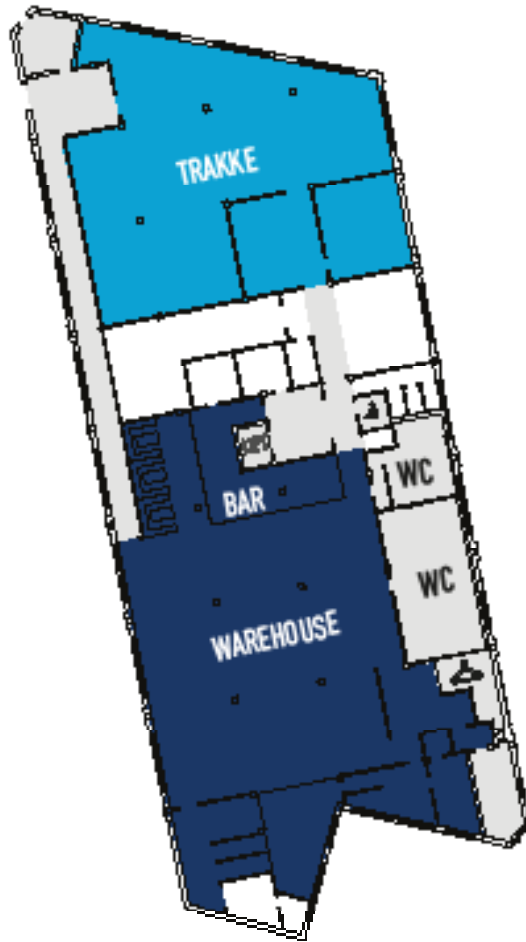
For equipment that is larger than these dimensions we have a Production Entrance to the north of the building, which is 2.4m wide x 2.4m high (8'x 8'). It can be accessed along a private road further up Sandyford St. Please arrange this with the venue in advance of your arrival.

SWG3 COMPLEX

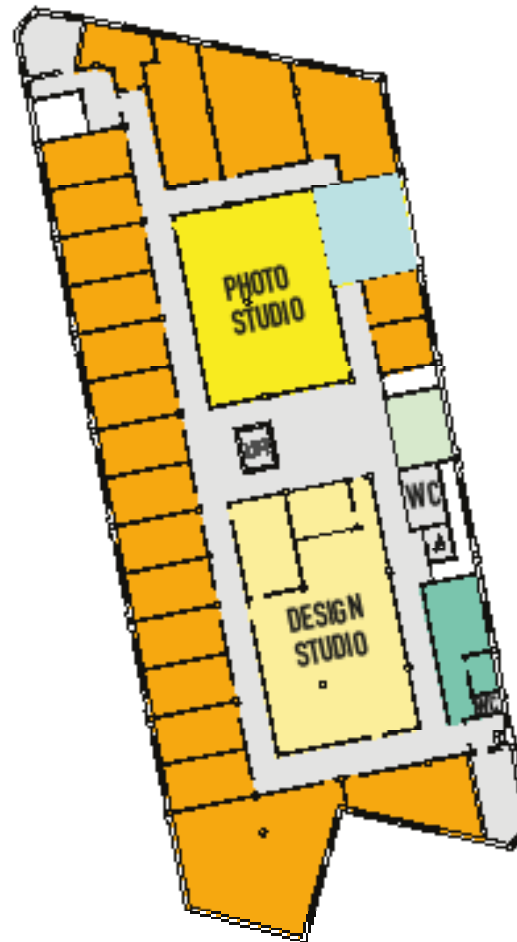
GROUND LEVEL



LEVEL 1

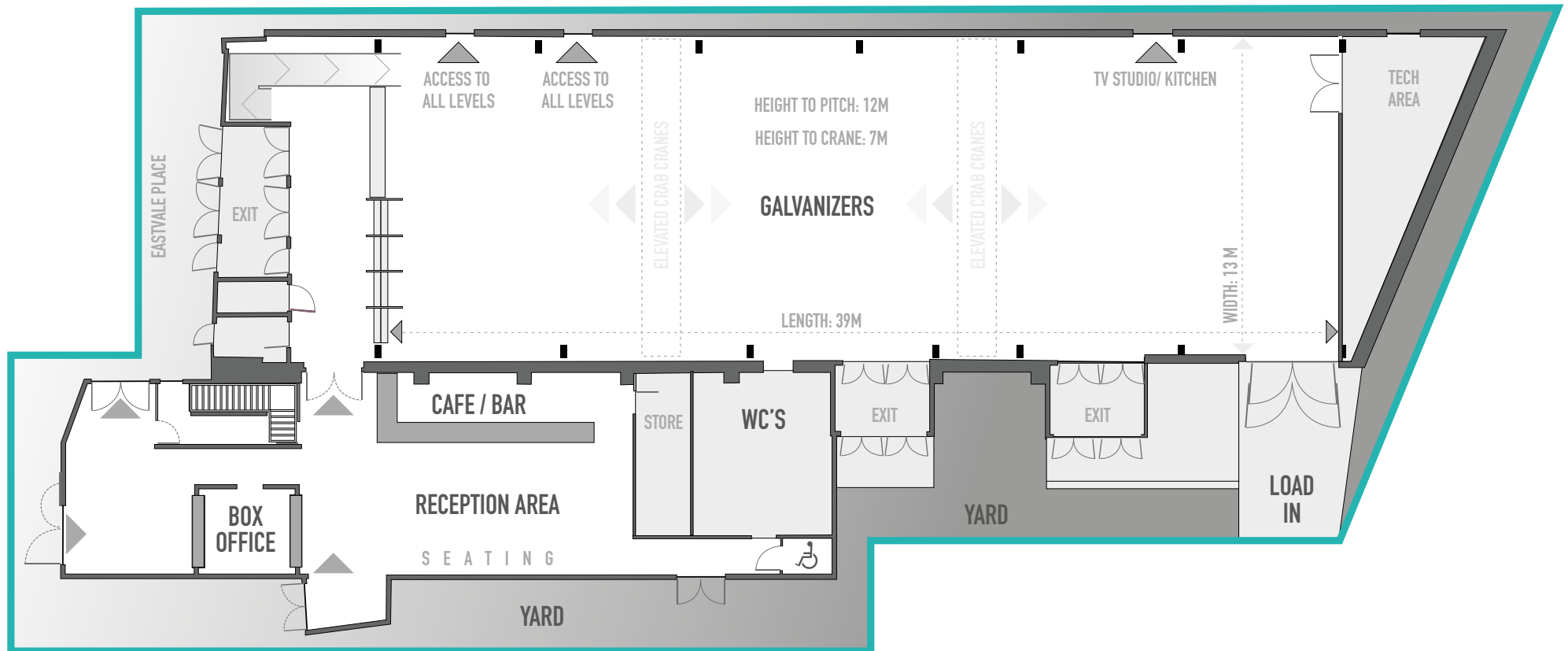


LEVEL 2



- WAREHOUSE
- TRAKKE
- ARTIST STUDIOS
- DESIGN STUDIO
- PHOTO STUDIO
- ACCESS
- KITCHEN
- DRESSING ROOM 1
- DRESSING ROOM 2

GALVANIZERS



PRODUCTION OFFICE

The former Cyldeside Galvanizers Yard has been transformed into SWG3's largest event space.

GALVANISERS

PA

D&B V Series Line Array
(Array Processing Enabled)
consisting of:

- 6 x D&B V8 Per Side
- 12 x D&B V-SUB Array
- 2 x D&B Y7P Front Fill
- 2 x D&B V7P Delays
- 6 x D&B D80 Amplifiers

MONITORS (LIVE)

- 10 x D&B M4 Wedges
- 2 x D&B B6 Subwoofers
- 2 x D&B D20 Amplifiers

MONITORS (CLUB)

Normal setup is:

- 2 x B6 Subwoofer
- 2 x Y7 Tops

If Available we can provide

- 4 x V-Sub and 4 x V8 tops

CONSOLES

- Midas Pro 2
- Midas Pro 2c
- Midas DL251 Stage Box x 2

LIGHTING

- 8 x Robe Mega Pointe
- 12 x Robe Spider
- 6 x Clay Paky Stormy CC
- 12 x TMB 2-Cell Molefay
- 1 x Chamsys MQ80 Lighting Console
- 1 x Chamsys Extra Wing

STAGING

- 32' x 20' Stage
- 1.5m High
- 16' x 4' Wing SL
- 8' x 4' Wing SR

Clearance of 4.5m

RIGGING

- 3 x Total fabrications Super Heavy Duty Truss at 13m as Mothergrid (Locations rear of stage, Front of Stage and Back of room)
- Centre Point Loading of 1 Tonne
- UDL 2 Tonne
- 2 x Moveable Cranes
- Centre Point Load of 1 Tonne
- UDL 2 Tonne
- Audio Points:
- 2 x 1t GIS DB Motor

STAGE TRUSSING

- 1 x 10m Milos M390 Rear Truss
- On 2 x 1t GIS DB Motors
- 1 x 8m Milos M390 Front Truss
- On 2 x 500kg GIS DB Motors

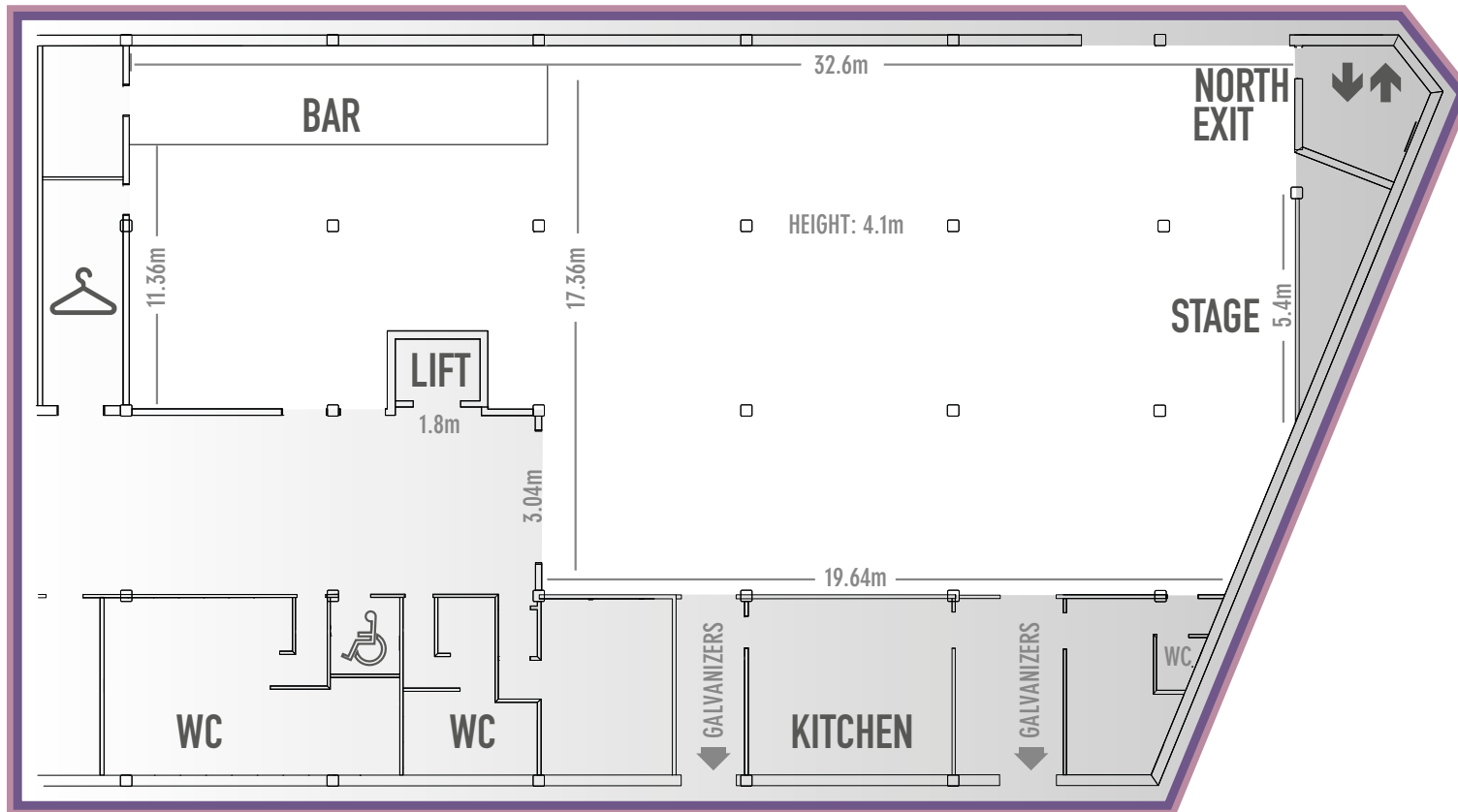
BACKLINE

- 1 x Pioneer DJM900 Nexus Mixer
- 1 x Allen & Heath Xone92 Mixer
- 2 x Pioneer CDJ2000 Nexus CDJs
- 2 x Technics 1210 MkII Turntables
- 2 x Ortofon DJ5 Catridges
- 2 x Netgear GS105 LAN Hub

POWER

Lighting Power 125/3 or 63/3 Ceeform.
Audio Power 63/3

TV STUDIO



CAPACITY

STANDING	1000
SEATED	600

STAGING SPECIFICATION

Stage width 7.3m (24ft)
Stage depth 3.6m (12ft)
Stage Ext width 7.3m (24ft)
Stage Ext Depth 1.2m (4ft)

Height from floor to stage 1m
Height from stage to ceiling 3.1m

Stage can be extended 6 sections of
8'x4' steel deck along the front.

10 x 1m sections of steel Mojo

PRODUCTION OFFICE

We have a 7m x 4m office located backstage with desk space and sinks. There is also a telephone line and Wi-Fi throughout the complex. It has direct access to the artist room.

MERCHANDISING BOOTH

There is no venue charge for any merchandise sold at shows.

DRESSING ROOMS

There is a day room / dressing room with shower and kitchen facilities on the 2nd level directly above the venue entrance.

There is also an additional dressing room located on this level, which can be used if required. There is a small artist room and toilet located backstage with direct access to the production office.

TV STUDIO SPEC

PA

D&B V Series Line Array
(Array Processing Enabled) consisting of:
2 x D&B V8 Per Side
2 x D&B V12 Per Side
8 x D&B V-SUB Array
2 x D&B Y7P Front Fill
2 x D&B Y7P Delays
6 x D&B D80 Amplifiers

Monitors (Live)

10 x D&B M4 Wedges
2 x D&B B6 Subwoofers
2 x D&B D20 Amplifiers

Monitors (Club)

Normal setup is:
2 x B6 Subwoofer
2 x Y7 Tops
If Available we can provide
4 x V-Sub and 4 x V8 tops

CONSOLES

Midas Pro 2
Midas Pro 2c
Midas DL251 Stage Box x 2

LIGHTING:

12 x Chauvet Rogue R1 Spots
8 x Chauvet Rogue R2 Washes
6 x Briteq all in one LED Par
4 x Martin Atomic 3000
3 x Source 4 Jr

BACKLINE

1 x Pioneer DJM900 Nexus Mixer
1 x Allen & Heath Xone92 Mixer
2 x Pioneer CDJ2000 Nexus CDJs
2 x Technics 1210 MkII Turntables
2 x Ortofon DJS Catridges
2 x Netgear GS105 LAN Hub

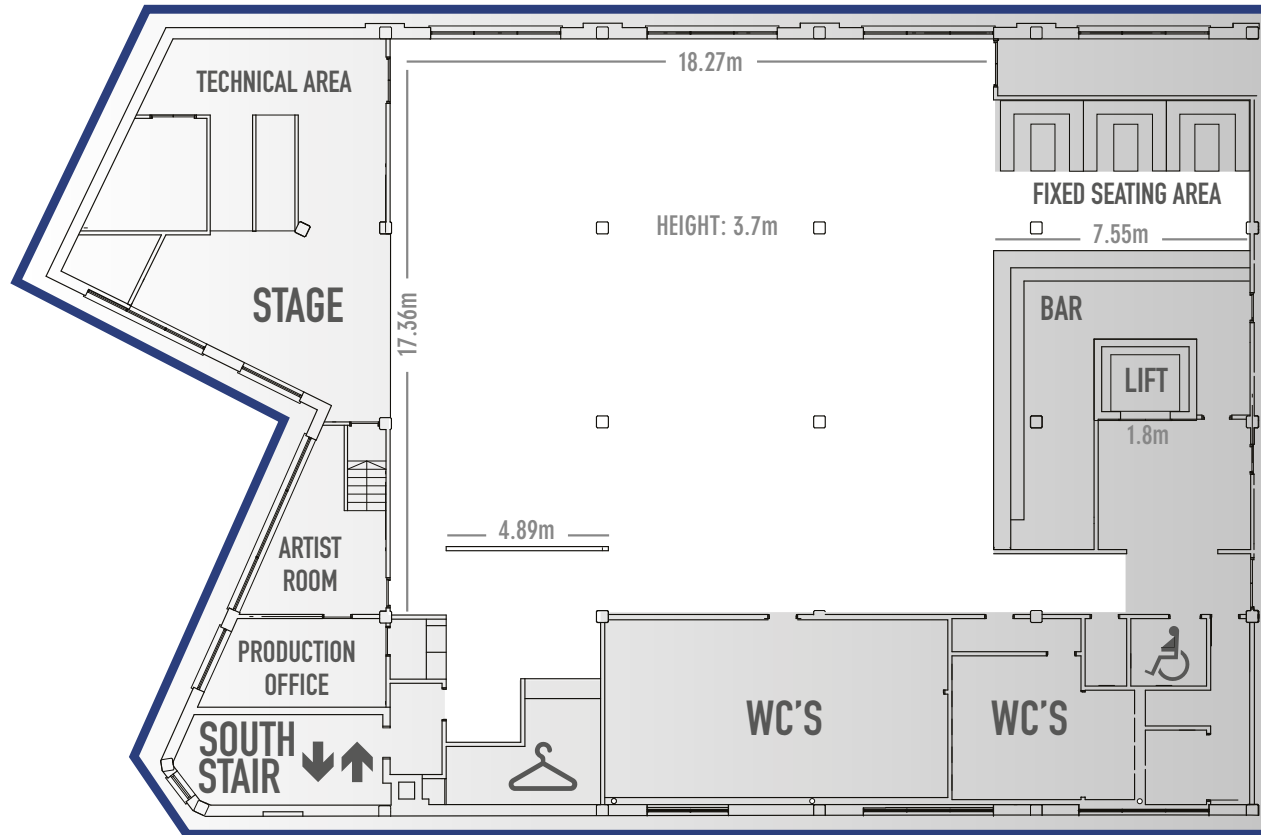
POWER

1 x 100A Three Phase Mains Supply
2 x 63a Three Phase Socket (Stage)
3 x 32a Three Phase Socket (Stage)
4 x 16a Socket (Backstage)
12 x 16a Socket (Dancefloor)
2 x Dual Gang 13a Sockets (Backstage)
8 x Dual gang 13a Sockets (Dancefloor)

RIGGING

6 x Milos Quatro M290V Truss 200kg UDL)
57 x Scaffold Bars (50kg UDL)
2 x PA Rigging Point (200kg UDL)

WAREHOUSE



CAPACITY

STANDING	500
SEATED	350

STAGING SPECIFICATION

Stage width 5.85m
Stage depth 3.8m
Drum Riser width 3.2m
Drum Riser depth 2.5m

Height from floor to stage 1m
Height from stage to ceiling 2.7m

Stage extension with 6 sections of 8'x4' steel deck along the front of the fixed stage.

8 x 1m sections of steel Mojo

PRODUCTION OFFICE

We have a 7m x 4m office located backstage with desk space and sinks. There is also a telephone line and Wi-Fi throughout the complex. It has direct access to the artist room.

MERCHANDISING BOOTH

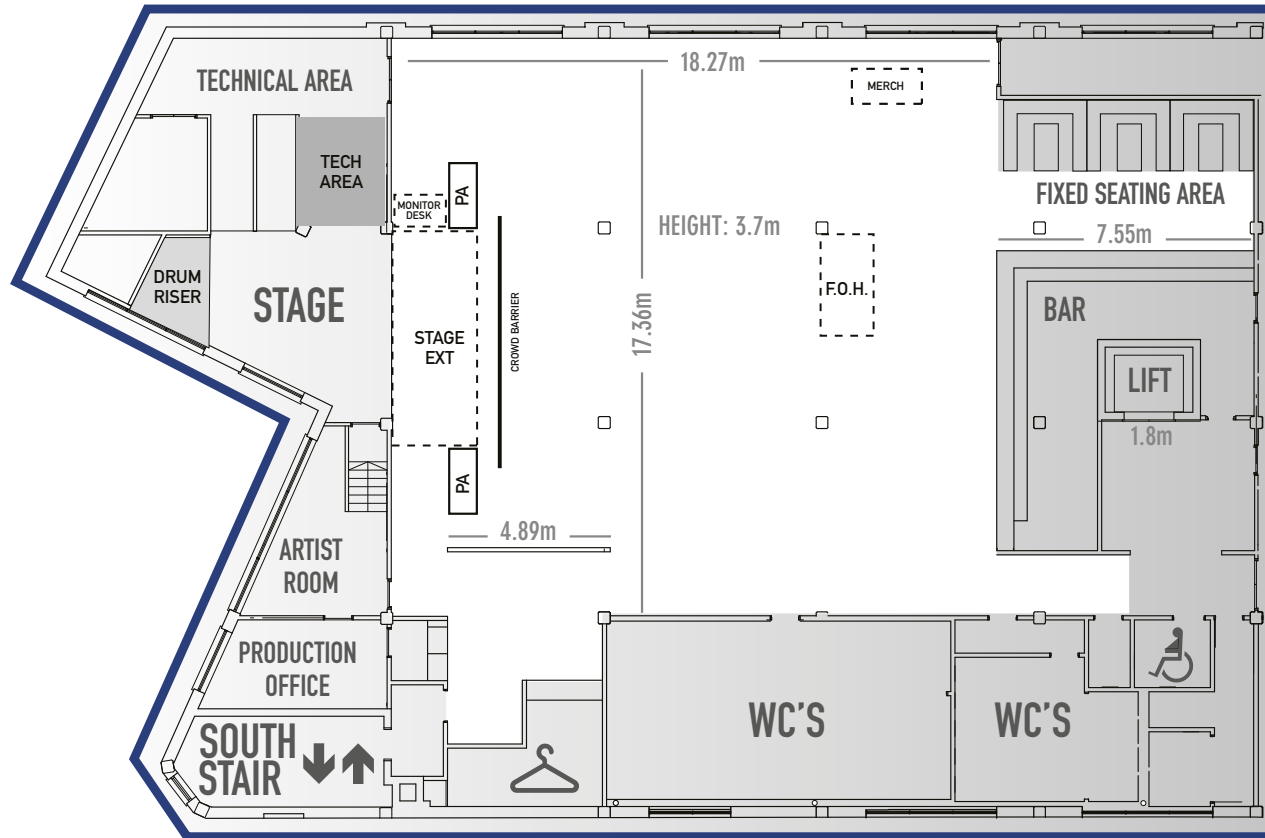
There is no venue charge for any merchandise sold at shows.

DRESSING ROOMS

There is a day room / dressing room with shower and kitchen facilities on the 2nd level directly above the venue entrance.

There is also an additional dressing room located on this level, which can be used if required. There is a small artist room and toilet located backstage with direct access to the production office.

WAREHOUSE (LIVE)



CAPACITY

STANDING	500
SEATED	350

STAGING SPECIFICATION

Stage width 5.85m
Stage depth 3.8m
Drum Riser width 3.2m
Drum Riser depth 2.5m

Height from floor to stage 1m
Height from stage to ceiling 2.7m

Stage extension with 6 sections of 8'x4'
steel deck along the front of the fixed
stage.

8 x 1m sections of steel Mojo

PRODUCTION OFFICE

We have a 7m x 4m office located backstage with desk space and sinks. There is also a telephone line and Wi-Fi throughout the complex. It has direct access to the artist room.

MERCHANDISING BOOTH

There is no venue charge for any merchandise sold at shows.

DRESSING ROOMS

There is a day room / dressing room with shower and kitchen facilities on the 2nd level directly above the venue entrance.

There is also an additional dressing room located on this level, which can be used if required. There is a small artist room and toilet located backstage with direct access to the production office.

WAREHOUSE SPEC

PA

D&B Q Series PA Consisting of:

- 4 x Q1 Tops
- 2 x B2 Subs
- 2 x C4 Sub
- 3 x D80 Amplifiers
- 2 x Y7P Delays

CONSOLE

- 1 x Midas Pro 1
- 1 x Midas DL251 Stage Box

Monitors are done from FOH but a monitor console and engineer can be arranged at an extra charge.

MONITORS LIVE

- 8 x D&B M4 Wedges
- 2 x D&B D20 Amplifiers
- 2 x D&B B6 Subwoofers

MONITORS CLUB

- 2 x D&B B6 Subwoofers
- 2 x Y7 Tops

LIGHTING

- 8 x Chauvet Rogue R1 Spots
- 8 x Chauvet Intimidator Trios
- 2 x Martin Atomic 3000
- 6 x Briteq 6in1 LED Stage Pars
- 1 x Chamsys PC Wing and Touch Screen laptop.

BACKLINE

- 1 x Pioneer DJM900 Nexus Mixer
- 1 x Allen & Heath Xone92 Mixer
- 2 x Pioneer CDJ2000 Nexus CDJs
- 2 x Technics 1210 MkII Turntables
- 2 x Ortofon DJS Catridges
- 2 x Netgear GS105 LAN Hub

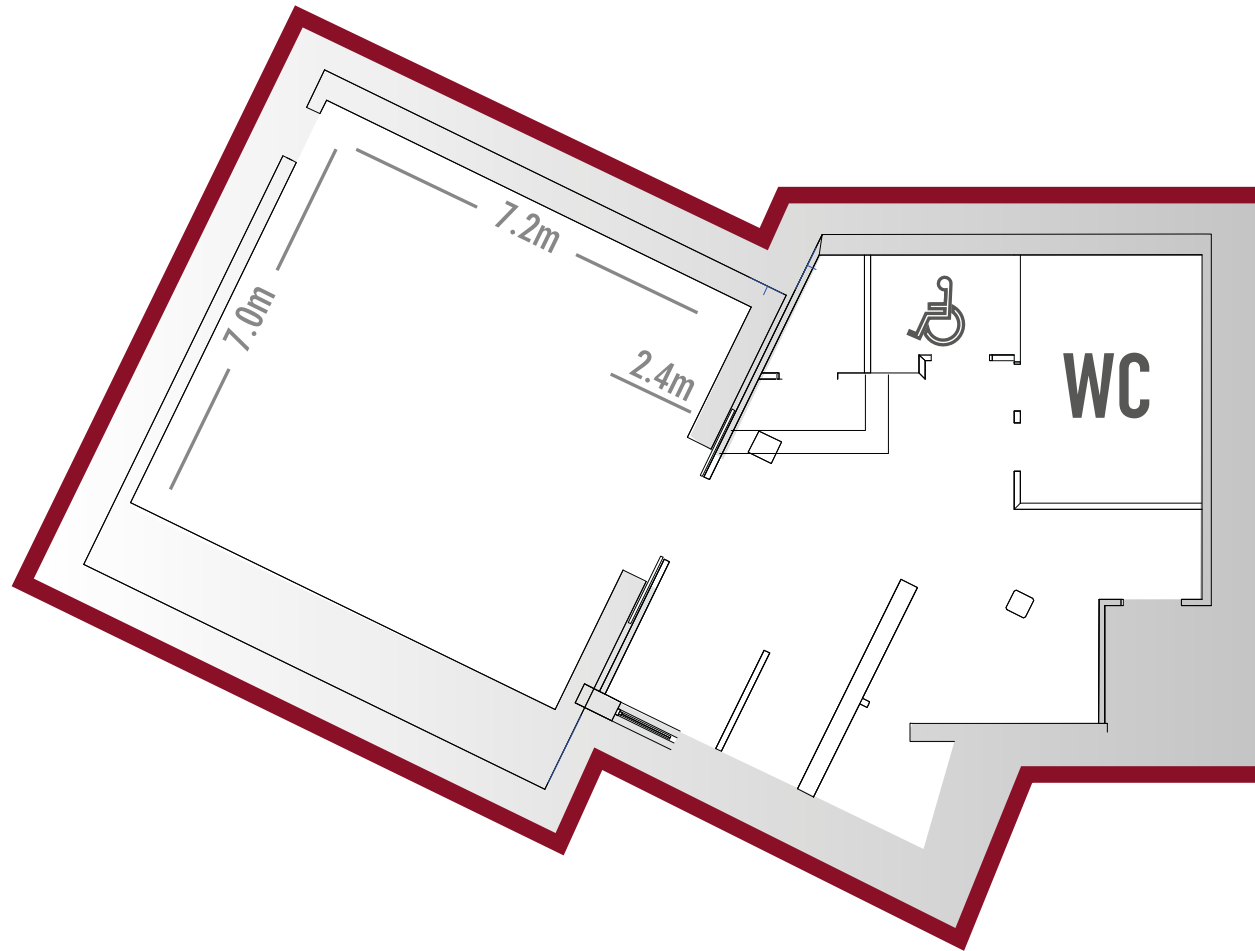
POWER

- 1 x 63A Three Phase Mains Supply:
- 1 x 32a Three Phase Socket (Stage)
- 2 x 32a Socket (Backstage)
- 8 x 16a Socket (Backstage)
- 8 x 13a Dual Gang Sockets (Stage)
- 22 x 13a Dual Gang Sockets (Dancefloor)
- 1 x 22 Way 16a Patchbay (Dancefloor)

RIGGING

- 4 x 5m Trilite Truss (120kg UDL)
- 2 x 3m Trilite Truss (90kg UDL)
- 2 x 2m Truss (60kg UDL)
- 20 x Scaffold Bars (40kg UDL)
- 2 x PA Rigging Point (300kg UDL)

POETRY CLUB



CAPACITY

CLUB NIGHTS	135
GIGS	100
SEATED	85

POETRY CLUB SPEC

FOH SYSTEM

- 2 x D&B C6 Top
- 4 x D&B C4 Sub
- 2 x D&B P1200A
- 2 x EV Evid 4.2 (Bar Area)
- 1 x FOH Console

BACKLINE

- 1x Pioneer DJM800 Mixer
- 2x Technics 1200 Mk5 Turntables
- 2x Ortofon ProS Cartridges

LIGHTING

- 1 x Zero88 Juggler 12/24 Lighting Desk
- 2 x Lanta Tri LED Par Cans
- 6 x Pulsar ChromaZone CZ6 LED Lights
- 4 x Lanta Saturn Quad Beam
- 2 x Lanta Lasers
- 1 x Martin Atomic Strobe
- 1 x Le Maitre Neutron XS Hazer
- 1 x Antari Z-800 Smoke Machine (Train)
- 2 x Optikinetics Solar 250 (Bar)

VIDEO

- 1 x 100" 16:9 Projector Screen (Stage)
- 1 x Cannon 2200MP Projector (Bar Area)
- 1 x Sandstrom S22FED12 LED Screen (Cloakroom)

POWER

- 1 x 32a Single Phase Mains Supply:
- 2 x 16a Socket (DJ Booth)
- 4 x Dual Gang 13a Sockets (DJ Booth)
- 1 x Dual gang 13a Socket (Mezzanine)

RIGGING

- 6 x Milos Quatro M290V Truss (200kg UDL)
- 5 x Scaffold Bars (40kg UDL)

